



Password;  
Customer Number;

# Coinline Auction Number 69

Starts Thursday 29th March 9. 00 am DST  
Finishes Tuesday 3rd April 10. 00 pm DST



**To Bid Call 02 47 84 2599 (24 hours)**

Information Call

02 47 841470

Pacific Rim Coins Pty Ltd  
Po Box 5  
Wentworth Falls  
NSW 2782

Websites;

[Pacifirimcoins.com.au](http://Pacifirimcoins.com.au)

[Aussiegradedcoins.com.au](http://Aussiegradedcoins.com.au)

\*New Articles

\*Stock Lists

# Coinline Auction Number 69 April 2007

---

Welcome to Coinline 69. Once again 400 lots comprising a good cross section of material. The catalogue is available on our website

**Pacificrimcoins.com.au.** I have spent some time updating the site & hope you find the new articles informative.

This auction has plenty of mint issues, GB, Australian copper silver & gold, many pieces graded by PCGS. A cautionary note beware of Australian copper recoloured that is a Unc coins cleaned with colour added to enhance the price. A recent auction I attended saw two pieces with colour added go for \$1000 & \$2500 respectively. Even professional dealers make mistakes on some of these tricky coins.

You may not be aware that PCGS has now graded 11,000,000 coins with a total value in excess of 13 Billion US dollars. With the coin market booming this one service is grading 7000 coins per day!. Every decent coin in Australia could be graded in one week.

If you wish to view items we will be at the Sydney ANDA fair at table number 25. As usual if you have any questions drop me a line or give me a call.

Good luck with your bidding.

Regards Chris Buesnell



## How to Bid

**Step 1:** Decide on what lots you may be interested

**Step 2:** Dial Coinline on 02 47 84 2599

You will be asked for your bidder numbers. Enter these by pushing the numbers on your telephone.

Next you will be asked for the lot number you wish to bid on. If you do not wish to bid you can still check on the current bids on any lot.

Bidding increments are set at 5%.

**Payment:** All lots must be paid for before shipping. We accept cheques, money orders, visa, mastercard & bankcard. Please note there is a **2% surcharge** on all Credit Card Payments. We do not accept AMEX or Diners card.

**Returns:** All sales 21 days after auction final. No exceptions. Third party graded coins are sold as is. Coins may be returned to Reply Paid 14 (You just pay registration.) Lots may be returned a reasonable time after receipt. We make every effort that coins are as described.

**Postage:** Postage is charged at cost. All items are sent Registered mail.

<i>Lot</i>	<i>Description</i>	<i>Opening Bid</i>	<i>Lot</i>	<i>Description</i>	<i>Opening Bid</i>
<b>Australian Mint Product</b>			<b>Proof Sets</b>		
<b>Mint Sets</b>			055	1989, Roo	\$40
001	1966, Blue Wallet	\$100	056	1990, Aboriginal Art	\$50
002	1981,1982,1983	\$25	057	1991, Decimal Currency	\$50
003	1981,1982,1983	\$25	058	1992, Olympics	\$50
004	1985,1986,1987	\$45	059	1993, Water is Life	\$40
005	1985,1986,1987	\$45	060	1994, Year Child	\$50
006	1988, 1989	\$40	061	1995, Dunlop	\$50
007	1988,1989	\$40	062	1996, Parkes	\$60
008	1989,1991	\$45	063	1997, Smith	\$100
009	1990, Scarce Set	\$75	064	1998, Florey	\$60
010	1990, Scarce Set	\$75	065	1999, Older Persons	\$60
011	1990, Scarce Set	\$75	066	2000, Olympics	\$150
012	1991, Currency	\$25	067	2001, Federation	\$100
013	1991, Currency	\$25	068	2002, Outback	\$60
014	1992, Olympics	\$50	069	2003	\$60
015	1992, Olympics	\$50	070	2004	\$60
016	1992, Olympics	\$50	071	2005	\$60
017	1993, Water	\$25	<b>Other Mint Product</b>		
017	1993, Water	\$25	072	1988 Proof \$5 (3)	\$30
018	1994, Year Child	\$25	073	1988 Proof \$2 (2)	\$25
019	1994, Year Child	\$25	074	2006 TV Proof \$1 Logo	\$30
020	1995, Dunlop	\$35	075	2006 TV Proof \$1, Logo	\$30
021	1995, Dunlop	\$35	076	1994 Masterpieces in Silver	\$80
022	1996, Parkes	\$25	<b>Mint Rolls</b>		
023	1996, Parkes	\$25	077	1964 Penny Roll	\$100
024	1997, Smith	\$50	078	1964 Penny Roll	\$100
025	1997, Smith	\$50	079	1964 Perth Penny Roll	\$100
026	1998, Florey	\$30	080	1954 Sixpence Roll	\$250
027	1998, Florey	\$30	081	1958 Sixpence Roll	\$200
028	1999, Older Persons	\$30	082	1962 Sixpence Roll	\$80
029	1999 (2)	\$50	<b>Pre Decimal Collections</b>		
030	2000, Olympics	\$50	083	1/2 Penny Set Complete (no 23)	
031	2000, Olympics	\$50		New Dansco Album	\$100
032	2001, Federation	\$40	084	1/2 Penny Set Complete (no 23)	
033	2002	\$25		New Dansco Album	\$100
034	2002	\$25	085	1/2 Penny Set Complete (no 23)	
035	2003	\$25		Housed in Sheet	\$80
036	2003	\$25	086	1/2 Penny Set Complete (no 23)	
037	2004	\$25		Supreme Dansco Album	\$125
038	2004	\$25	087	Threepence 1910 to 1964	
039	2004	\$25		Complete in Sheet, above Average	\$75
040	2005	\$25	088	Sixpence 1910 to 1963	
041	2005 (2)	\$50		Complete in Sheet, above Average	\$75
042	2005 (7)	\$175	089	3d & 6d Complete	
<b>Proof Sets</b>				Dansco Album	\$150
043	1975, Scarce	\$35	090	Shilling Complete 1910 to 1963	
044	1976, Scarce	\$50		New Dansco Album	\$250
045	1976, Scarce	\$50	091	Shilling Complete 1910 to 1963	
046	1977, Jubilee	\$30		New Dansco Album	\$250
047	1978	\$25	092	Florin (no 32 or Cent)	
048	1979	\$25		Old time album includes obverses	
049	1980 & 1981	\$35		& is nicely above average, earlies	
050	1982,1983 & 1984	\$60		are acceptable VG +, 1925 & 26	
051	1985	\$25		have mint lustre, QE11 EF or better	\$500
052	1986	\$25	093	Florin set (no 32 or Cent)	
053	1987	\$25		New Dansco album with obverses	
054	1988	\$40		VG to Unc, acceptable set	\$450

<i>Lot</i>	<i>Description</i>	<i>Opening Bid</i>	<i>Lot</i>	<i>Description</i>	<i>Opening Bid</i>
<b>1.2 Bulk Pre Decimal &amp; Special Offers</b>			<b>1.4 Coins of England</b>		
094	<b>Vienna Hoard Collection</b> Florins 1943,1944,1944S 1945,1946,1947, Shilling 1944S All Ex Mint Rolls & Number 73 of 100 issued	\$250	122	1/3 Farthing, 1913 Uncirculated	\$35
095	<b>1943M 1/2 Pennies</b> Mint red Uncirculated (10)	\$100	123	1890 Farthing, Uncirculated	\$25
096	1961 Shillings MS 64 (20)	\$100	124	1896 Farthing, Red Uncirculated	\$25
097	1961 Shillings MS 64 (20)	\$100	125	1901, 1/2 Penny Full Red Unc	\$25
098	1946 Florins Unc (5)	\$50	126	1901, 1/2 Penny Red Uncirc (2)	\$50
099	1947 Florins Unc (5)	\$50	127	1901 & 1902 1/2d Red Unc	\$50
100	1951 Jubilee Florins Unc (5)	\$50	128	1858, Penny Extremely Fine	\$50
101	1954 RV Florins Unc (5)	\$50	129	1900, Penny, Uncirculated	\$25
102	<b>1927 Canberra Florins</b> aUnc to Unc, nice lot (4)	\$100	130	1901, Penny Choice Unc	\$35
103	1927 Canberra Florins Good VF (20)	\$150	131	1913, Penny Uncirculated	\$25
104	1927 Canberra Florins Good VF (20)	\$150	132	1918, Penny Uncirculated	\$25
105	1937 Crowns good VF (5)	\$100	133	1919, Penny Uncirculated	\$25
106	1937 Crowns good VF (5)	\$100	134	<b>Pennies 1901, 1936 &amp; 1940</b> Choice Uncirculated	\$50
107	1954 Sixpences Gems Ex Roll (5)	\$60	135	1920 Penny Choice Unc	\$35
108	1954 Sixpences Gems Ex Roll (5)	\$60	136	<b>William &amp; Mary Threepence</b> 1689 Very Fine	\$50
<b>1.3 Proclamation</b>			137	<b>George 111 Threepence</b> 1762, Very Fine	\$40
109	1797 Cartwheel 2 Pence Nice Fine	\$75	138	Threepence, 1887 Uncirculated	\$25
110	1797 Cartwheel 2 Pence Very Fine	\$150	139	Threepence 1901 Uncirculated	\$25
111	1797 Cartwheel 2 Pence Nearly Uncirculated	\$350	140	Threepence, 1902 Uncirculated	\$25
112	1799 1/2 Penny Very Fine	\$25	141	Threepence, 1916 Uncirculated	\$25
113	1797 Cartwheel Penny Nice Fine	\$50	142	Fourpence, 1683 Very Fine	\$50
114	1797 Cartwheel Penny Good VF & Scarce	\$150	143	Sixpence, 1912 Extremely Fine	\$25
115	1787 Sixpence Extremely Fine	\$50	144	Sixpence, 1914 Choice Unc	\$25
116	1787 Shilling Very Fine	\$50	145	Sixpence, 1924 Choice Unc	\$25
117	1787 Shilling Very Fine	\$50	146	Sixpence, 1928 Uncirculated	\$25
118	<b>Mexico Charles 1111</b> 8 Reales 1792 FM (host coin for the holey \$1) EF	\$250	147	Shilling, 1705 Extremely Fine	\$300
119	1787 Sixpences VF (2), 1787 Shillings VG & Fine	\$100	148	Shilling, 1711, Fine	\$50
<b>1.3 Decimal Sets</b>			149	<b>Shilling 1723 SSC</b> George 11, Good Fine	\$50
120	<b>1 &amp; 2c Collection</b> 1966 to 1991 Unc & Specimen Housed in New Supreme	\$150	150	Shilling, 1720 Fine	\$50
121	<b>Fifty Cent Collection</b> 1966 to 2003 (no NT or SA Federation ) Unc to Specimen in Supreme Dansco Album	\$250	151	Shilling, 1902 Very Fine	\$25
			152	Shilling, 1916 Extremely Fine	\$25
			153	Shilling, 1918 Extremely Fine	\$25
			154	Florins 1906,1907,1910 Fine	\$75
			155	Florins 1912,1915, 1916, 1917, 1918, 1919 Good Fine/VF	\$60
			156	Florin 1928 aUnc, 1929 Unc, 1930 EF, 1936 Choice Unc	\$100
			157	1/2 Crown, 1907 Good VF	\$50
			158	1/2 Crown, 1923 Extremely Fine	\$25
			159	1/2 Crown, 1932 Uncirculated	\$35
			160	<b>Crown 1662 Charles 11</b> Nice type coin Good VF	\$800
			161	<b>Crown, Charles 11</b> 1676 Good Fine	\$200
			162	Crown 1696, Fine	\$100
			163	Crown 1900, Very Fine	\$25
			164	<b>Crowns 1935,1937,1951,1953</b> 1960,1972,1980,1981 VF to BU	\$75
			165	Crowns 1935,1937,1951,1953 1960,1972,1980,1981 VF to BU	\$75
			166	Proof Sets, 1984 & 1987	\$30
			167	Proof Sets, 1987 & 1992	\$30
			168	Proof Set, 1993	\$25

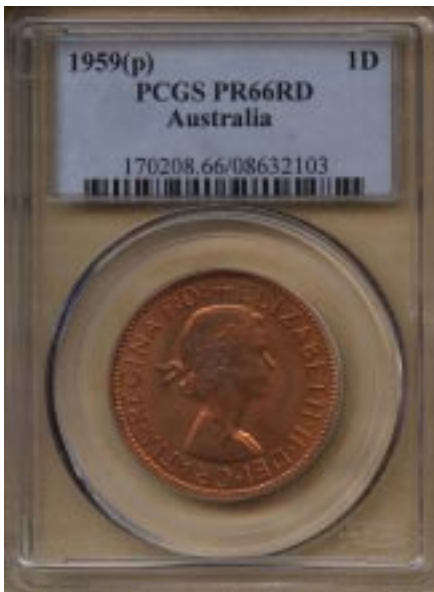
<i>Lot</i>	<i>Description</i>	<i>Opening Bid</i>	<i>Lot</i>	<i>Description</i>	<i>Opening Bid</i>
<b>1.5 World Coins</b>			<b>Florins, Continued</b>		
169	<b>New Guinea Proof Pair 1929</b> 1/2 Penny PCGS graded PR 65 Penny PCGS Graded PR 64	\$2200	193	<b>1915, Nearly EF</b> Reverse is EF, Coin exhibits original mint lustre, certainly a key date	\$500
170	<b>Canada 5 Cent 1922</b> PCGS Graded MS 64 The scarce & popular nickel issue	\$250	194	<b>1915H, EF</b> Again some original bloom & very hard to source	\$450
171	<b>Canada 10 cents 1910</b> PCGS Graded MS 63 Lovely coin with blue & green toning (cat \$500)	\$325	195	1916, Extremely Fine	\$150
172	<b>Canada 10c 1920</b> PCGS Graded MS64	\$200	196	1917, Extremely Fine	\$150
173	<b>Canada 25c 1917</b> PCGS Graded MS 65	\$1000	197	1918, Very Fine	\$50
174	<b>Canada 25c 1919</b> PCGS Graded MS 64	\$500	198	1919, Good Fine	\$50
175	<b>Canada 25c 1933</b> PCGS Graded MS 65	\$1200	199	1924 EF/gEF, full feathers & nice mint lustre	\$250
176	<b>Canada 50 Cents 1918</b> PCGS Graded MS 64	\$2500	200	1925, Nearly Unc Really nice coin early strike	\$200
177	<b>Canada 50c 1919</b> PCGS Graded MS 63	\$1500	201	1926, Extremely Fine & Scarce	\$100
178	<b>Canada 50c 1920</b> PCGS Graded MS 64	\$2500	202	1927 Nearly EF	\$25
179	<b>Canada 50c 1929</b> NGC Graded MS 63	\$1250	203	<b>1927 Canberra, Uncirculated</b>	\$50
180	<b>Jersey 1/24 Shilling 1877H</b> & 1/12 Shilling 1877H Mint Red, aUnc	\$50	204	1928, Extremely Fine	\$50
181	<b>Jersey, 1/24th Shilling</b> 1894, 1909 & 1926 Mint red aUnc	\$50	205	1932, Very Good	\$150
182	<b>Jersey 1/24th Shilling</b> & 1/12th Shilling 1909 Choice Unc (cat \$100 US)	\$75	206	1932, Very Good	\$150
183	<b>Jersey 1/12th Shillings</b> 1894, aUnc, 1909 Unc, 1911 Unc 1923 Choice Unc & 1966 BU	\$100	207	1933, Lustrous aEF	\$350
<b>1.5 Australian Coins</b>			208	1934 gVF/EF with lustre	\$25
<b>Crowns</b>			209	1935, Extremely Fine	\$50
184	1937, aUnc nice lustre with full cross on orb	\$40	210	1936, good EF	\$35
185	1937, as above except uncirculated wiyh no major marks	\$75	211	1938, Uncirculated	\$50
186	1938, Good VF	\$100	212	1939, Very Fine	\$25
187	1938, Good VF	\$100	213	1939, Good Very Fine	\$50
<b>Florins</b>			214	1940, aUnc, 1941 Unc	\$50
188	1910, Good Fine	\$50	215	1942S, Choice Unc	\$50
189	1911, Fine 6 pearls	\$50	216	1943, Uncirculated	\$25
190	<b>1913, Good VF</b> Full centre diamond & original mint lustre	\$300	217	1943S, Choice Uncirculated	\$25
191	1914, about EF	\$65	218	1944S, Choice Uncirculated	\$35
192	<b>1914H, about EF</b> Original mint lustre, this coin problem free & key date	\$500	219	1953, Choice Uncirculated	\$25
			220	1956, Choice Uncirculated	\$125
			221	<b>1957 to 1963</b> Choice Uncirculated	\$75
			<b>Shillings</b>		
			222	1910, EF/gEF Nice coin with lustre	\$50
			223	1911, Nearly VF	\$25
			224	1916, Extremely Fine	\$35
			225	1916, Good Extremely Fine	\$50
			226	1917, Extremely Fine	\$35
			227	1917, Good Extremely Fine	\$50
			228	1918, Nearly EF	\$25
			229	1920, Good VF	\$35
			230	1921*, Good VF	\$100
			231	1925 & 1926 Good VF	\$35
			232	1927, Nearly Uncirculated	\$75
			233	1931, Good EF	\$75
			234	1935, Uncirculated	\$150
			235	1942S, Choice Uncirculated Fully struck reverse	\$50
			236	1943M, Choice Unc Very Scarce date	\$125
			237	1946 Perth Uncirculated, Scarce	\$150



**1871 Sydney YH Sovereign PCGSAU 58**



**1875 Melbourne YH Sovereign PCGS MS63**



**1959 Perth Penny PCGS PR66 Red**



**1916 Bombay 1/2 Penny PCGS MS65RB**



**1925 1/2 Penny  
PCGS MS64RB**

**1951PL 1/2 Penny  
PCGS MS66 Red**





1941M Penny PCGS MS64 Red



1914 Threepence PCGS 1914 MS 63



1938 Sixpence PCGS MS65



1955 Sixpence PCGS MS66



1918 Shilling  
PCGS MS64

1943 Shilling  
PCGS MS64



Please Note Bidding rises are 5%

Finishes Tuesday 3rd April 10.00 pm

<i>Lot</i>	<i>Description</i>	<i>Opening Bid</i>	<i>Lot</i>	<i>Description</i>	<i>Opening Bid</i>
<b>Sixpences</b>			<b>1/2 Pennies</b>		
238	1910, Nearly Uncirculated	\$65	284	1912, aUnc/Unc	
239	1911, Good VF	\$35		20% mint Red	\$75
240	1912, Extremely Fine	\$250	285	<b>1925, Uncirculated</b>	
241	1914, Very Fine	\$25		Mint Red & a key date	\$500
242	<b>1916, Nearly Uncirculated</b>		286	<b>1931, Uncirculated</b>	
	Blue & Gold toning	\$500		Nice lustre & key date	\$500
243	1917, Good Extremely Fine	\$250	287	<b>1935, Choice Unc</b>	
244	1918, Very Fine	\$250		Full mint red	\$250
245	1920, Good VF	\$50	288	1943, Choice Unc	\$25
246	1921, Nearly Uncirculated	\$125	289	1945, Uncirculated	\$50
247	1922, good Extremely Fine	\$500	290	1950, 1951, 1951Y, 1951PL	
248	1923, Extremely Fine	\$150		1952aUnc to Unc then	
249	1924, Good Very Fine	\$50		1953 to 1964 Choice Unc	\$125
250	1925, Extremely Fine	\$75	<b>1.7 Pre Decimal Proofs</b>		
251	1926, Extremely Fine	\$30	291	<b>1962 Perth Pair</b>	
252	1927, Good Extremely Fine	\$50		Penny PR 63 RB,	
253	1928, Extremely Fine	\$25		1/2 Penny Supurb PR 65 Red	\$750
254	1934, Nearly Extremely Fine	\$25	292	<b>1960 Perth Penny,</b>	
255	1935, Extremely Fine	\$75		Proof 63 Red & Brown	\$350
<b>Threepences</b>			293	<b>1961 Perth Penny,</b>	
256	1911, aEF/EF	\$50		Proof 63 Red Brown	\$350
257	1912, VF	\$25	294	<b>1963 Perth 1/2 Penny</b>	
258	<b>1914, Good EF, Key Date</b>	\$350		Proof 63 Red Brown	\$150
259	1915, Fine	\$75	295	<b>1963 Perth 1/2 Penny</b>	
260	1917, Good EF	\$50		Proof 64 Red & Brown	\$250
261	1918, Extremely Fine	\$35	296	<b>1956 Threepence</b>	
262	1922, Extremely Fine	\$50		PCGS Graded PR 66	
263	1923, EF/gEF key Date	\$350		A supurb Coin	\$150
264	1925, Extremely Fine	\$35	297	<b>1959 Sixpence</b>	
265	1926, Extremely Fine	\$35		PCGS Graded PR 66	\$250
266	1927, Extremely Fine	\$35	298	<b>1959 Shilling</b>	
267	1928, Good EF	\$35		PCGS Graded PR 66	\$250
268	1936, Nearly Uncirculated	\$25	299	<b>1959 Florin</b>	
269	1953, Choice Unc	\$100		PCGS Graded PR 64	\$250
270	1954, Choice Unc	\$100	300	<b>1959 Perth Penny</b>	
<b>Pennies</b>				PCGS Graded PR 66 Red	
271	<b>1918, Good EF</b>			Supurb coin	\$1500
	Scarce date	\$250	<b>1.8 Australian Gold</b>		
272	<b>1919 Dot Below</b>		<b>1/2 Sovereigns</b>		
	Uncirculated, Brown	\$250	301	<b>1906M</b> , Good Fine	\$150
273	1927, Extremely Fine	\$25	302	<b>1915 Perth</b>	
274	<b>1933/32 Overdate</b>			Uncirculated	\$350
	Very Fine	\$50	303	<b>1918 Perth</b>	
275	<b>1933/32 Overdate</b>			Extremely Fine, Mount Marks	
	Very Fine	\$50		on the obverse, a cheap	
276	1935, Uncirculated			example of the date	\$1000
	Red & Brown	\$150	<b>Sovereigns</b>		
277	1946, About Uncirculated		304	1864 Sydney Mint	
	30% Mint Red	\$500		PCGS AU 55	\$1000
278	1948 Perth		305	1866 Sydney Mint	
	Uncirculated Red & Brown	\$350		PCGS AU 55	\$1000
279	1953M, Full red Choice Unc	\$50	306	1867 Sydney Mint	
280	1956Y, Choice Uncirculated	\$25		PCGS AU 58	\$1000
281	1959M, Uncirculated	\$100	307	1870 Sydney Mint	
282	1960Y, Choice Uncirculated	\$50		PCGS AU 58	\$1000
283	<b>Collection 1955 to 1964</b>				
	Perth & Melbourne Mints				
	Unc to Choice Unc (15 Coins)	\$250			

<i>Lot</i>	<i>Description</i>	<i>Opening Bid</i>	<i>Lot</i>	<i>Description</i>	<i>Opening Bid</i>
<b>Sovereigns</b>			<b>PCGS Graded</b>		
308	<b>1871 Sydney</b> PCGS AU 58, One of the rarest dates in the whole series. The second I have offered in 23 years of business, the last in 1988 Cat 3750 aUnc, 5500 Unc	\$2500	326	<b>1925 1/2 Penny</b> PCGS MS64 RB, stunning coin, strike perfect. This coin a rare date in high grade, the best coin in this auction	\$4000
309	<b>1875 Melbourne</b> PCGS MS 63, Beautiful coin with subdued gold tone & perfect surfaces	\$2000	327	<b>1927 1/2 Penny</b> PCGS MS65RB, Great coin with perfect surfaces, highest graded & in top 5 of the date	\$1000
310	<b>1876 Melbourne</b> PCGS MS 61, early strike	\$1000	328	<b>1931 1/2 Penny</b> PCGS MS64BN Beautiful piece, sold by Laurie Nugent many years ago & now back on the market	\$3500
311	<b>1880 Melbourne</b> PCGS MS63, Lovely gem with BU lustre	\$2500	329	<b>1938 1/2 Penny</b> MS64 RB Mint roll fresh	\$200
312	<b>1885 Melbourne</b> PCGS MS 61	\$1000	330	<b>1950 Perth 1/2 Penny</b> MS63 RB , This coin as good as the date comes, rare	\$250
313	<b>1886 Melbourne</b> PCGS MS 62	\$750	331	<b>1951 Perth 1/2 Penny</b> MS63RB Ex Hagley	\$125
314	<b>1886 Sydney</b> PCGS MS 62	\$1500	332	<b>1951PL 1/2 Penny</b> MS66 Red	\$150
315	<b>1887 Sydney</b> PCGS MS 62	\$1500	333	<b>1953 Perth 1/2 Penny</b> MS63 RB Ex Roll	\$100
316	<b>1887 Melbourne Jubilee</b> PCGS MS 62, Lovely Coin	\$650	334	<b>1961 Perth 1/2 Penny</b> MS66 RB Ex Roll	\$100
317	<b>1889 Sydney Jubilee</b> PCGS MS 61 Beautiful full mint bloom	\$500	335	<b>1962 Perth 1/2 Penny</b> MS65 BN Ex Roll	\$100
318	<b>1890 Sydney</b> PCGS AU 58	\$350	336	<b>1917 Bombay Penny</b> PCGS MS63BN Well defined strike & portrait	\$750
319	<b>1895 Melbourne</b> PCGS MS 63	\$750	337	<b>1941M Penny</b> PCGS MS64 RB, Full mint bloom & ex part mint roll	\$500
320	<b>1899 Perth</b> PCGS AU 58 Lovely original mint lustre	\$1000	338	<b>1943 Perth Penny</b> MS64 RB, Graet coin struck with fresh dies, thus without the usual porosity of surface. Probably the third finest of the date	\$400
321	<b>1914 Melbourne</b> PCGS MS 64	\$275	339	<b>1943 Bombay Penny</b> PCGS MS64 Red, Equal highest graded (1 of 2), full mint red gem	\$350
<b>1.9 Australian Coins</b>			340	<b>1945 Perth Penny</b> PCGS MS63BN, Appealing coin & very scarce date	\$350
<b>PCGS Graded</b>			341	<b>1947 Penny</b> PCGS MS64 RB, Has a just struck freshness	\$250
<b>Halfpenny</b>			342	<b>1948 Penny</b> PCGS MS64 RB	\$100
322	<b>1914 Heaton Mint</b> PCGS MS 64 RB Key date	\$2500	343	<b>1949 Penny</b> PCGS MS65 RB	\$200
323	<b>1916 Bombay Mint</b> PCGS MS65 RB Prooflike Unc, early strike with fantastic surfaces, certainly in the top 3 of the date	\$1000	344	<b>1950 Penny</b> PCGS MS64 Red, gem	\$200
324	<b>1917 Bombay Mint</b> PCGS MS65 RB From the J Remmick collection, beautiful surfaces with the portrait of George V stunning	\$1000	345	<b>1950 Perth Penny</b> PCGS MS64 BN, rare in this grade	\$400
325	<b>1923 1/2 Penny</b> PCGS Graded VF 25 Problem free example,	\$3000			

Please Note Bidding rises are 5%

Finishes Tuesday 3rd April 10.00 pm

<i>Lot</i>	<i>Description</i>	<i>Opening Bid</i>	<i>Lot</i>	<i>Description</i>	<i>Opening Bid</i>
<b>PCGS Graded</b>			<b>PCGS Graded</b>		
346	<b>1951 London Penny</b> PCGS MS65RB	\$150	364	<b>1918 Shilling</b> PCGS MS64, outstanding coin with blast white lustre on the obverse, totally original	\$1500
347	<b>1952 Perth Penny</b> PCGS MS65RB, Ex S Hagley mint roll (Commonwealth Bank)	\$250	365	<b>1931 Shilling</b> PCGS MS64, Semi key date which would fit into the best of collections	\$1500
348	<b>1953 Perth Penny</b> PCGS MS63 BN Ex Roll	\$150	366	<b>1934 Shilling</b> PCGS MS62, Roll quality with blast white lustre	\$1500
349	<b>1955 M Penny</b> PCGS MS64 Red Perfect Gem	\$150	367	<b>1939 Shilling</b> PCGS AU58, full lustre with just a hint of wear	\$50
350	<b>1959 M Penny</b> PCGS MS64BN, Ex Mint Roll & the surface perfect	\$250	368	<b>1942S Shilling</b> PCGS MS63, fully struck reverse	\$125
351	<b>1911 Threepence</b> PCGS MS63, nice l type coin	\$1000	369	<b>1943 M Shilling</b> PCGS MS64 Ex roll & a key date George V I	\$400
352	<b>1914 Threepence</b> PCGS MS 63, The second hardest 3d after the 1923, seldom offered & in the top 3 or 4 of the date	\$5000	370	<b>1944 M Shilling</b> PCGS MS63 Ex Mint roll with fantastic eye appeal especially the reverse	\$200
353	<b>1938 Threepence</b> PCGS MS 64, nice little gem	\$200	371	<b>1946 Perth Shilling</b> PCGS MS62	\$500
354	<b>1943 Threepence</b> PCGS MS 64 ( if you think the estimate high try & find another one), Ex Gates Colln	\$200	372	<b>1948 Shilling</b> PCGS MS64, gem white lustre	\$200
355	<b>1943 Denver Threepence</b> PCGS MS 65	\$100	373	<b>1950 Shilling</b> PCGS MS63, very tough to find date, common in Unc but that little bit extra quite scarce	\$200
356	<b>1938 Sixpence</b> PCGS MS65	\$300	374	<b>1953 Shilling</b> PCGS MS66, A great coin awarded with super grade for eye appeal & blast white lustre	\$250
357	<b>1953 Sixpence</b> PCGS MS65, key date of the Elizabeth 11 series	\$750	375	<b>1956 Shilling</b> PCGS MS64, Another date in really ultimate grade. Probably will not exist in MS65 designation	\$250
358	<b>1954 Sixpence</b> PCGS MS 65 Usefull type coin as this is two years only	\$75	376	<b>1960 Shilling</b> PCGS MS66, A wonder coin as in "I wonder how this coin survived this nice"	\$100
359	<b>1955 Sixpence</b> PCGS MS66, The highest graded of the date & equal second highest of the generic type (1 QE11 sixpence graded in MS67)	\$200	377	<b>1962 Shilling</b> PCGS MS66, Perfect	\$100
360	<b>1956 Sixpence</b> PCGS MS64, Lovely gem, I really rate this coin as most Choice Unc's offered struggle to MS 62	\$300	378	<b>1923 Florin</b> PCGS MS63, Beautiful semi key date & a bargain at estimate	\$5000
361	<b>1960 Sixpence</b> PCGS MS64, Try to find this coin at a coin show, extremely underrated & as tough as many George V pieces in Unc	\$200	379	<b>1925 Florin</b> PCGS MS62, Problem free with choice lustre. The reverse fantastic	\$2500
362	<b>1961 Sixpence</b> PCGS MS65, Supurb gem & a semi key date, ex roll	\$100	380	<b>1927 Canberra Florin</b> PCGS MS64. If you want a canberra buy this coin, eye appeal is 10/10	\$350
363	<b>1916 Shilling</b> PCGS MS64, Beautiful coin with russet green & blue tones, reverse strike in particular perfect	\$1000	381	<b>1928 Florin</b> PCGS MS64. Great coin for a date set, very fresh	\$2000

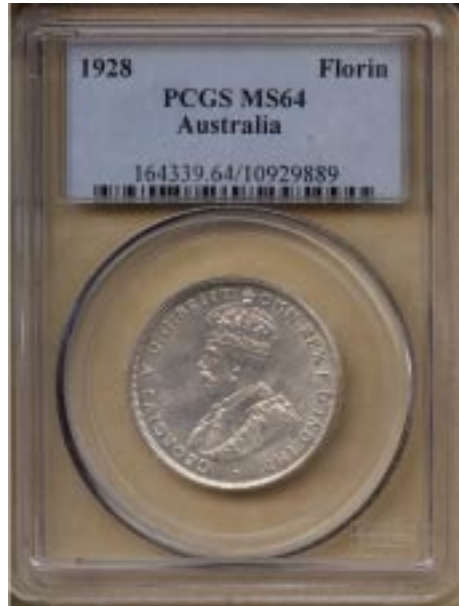
<i>Lot</i>	<i>Description</i>	<i>Opening Bid</i>	<i>Lot</i>	<i>Description</i>	<i>Opening Bid</i>
<b>PCGS Graded</b>			<b>Late Lots</b>		
382	<b>1931 Florin</b> PCGS MS64, A great coin for a type set. These must go up as in can any George V florin in MS64 not be worth \$1000 ?	\$1000	393	1993 Silver Kangaroo 1oz (2)	\$40
383	<b>1935 Florin</b> PCGS MS64, Ex Drapers hoard	\$3000	394	1995 & 1996 Kangaroo 1oz	\$40
384	<b>1932 Florin</b> PCGS AU58, the key date in the series & reasonably estimated	\$5000	395	<b>1980 Proof 1/2 Sovereign</b> In case of issue	\$100
385	<b>1938 Florin</b> PCGS MS63	\$250	396	<b>1980 Proof 1/2 Sovereign</b> In case of Issue	\$100
386	<b>1940 Florin</b> PCGS MS64, Very attractive coin & a high grade for the date	\$300	397	One dollar Unc coins 1984 (2), 1993 in BBC Hardware cards (4), 1993C (5), 1993 S(5) 1993 M (5) , 1996C (4) all in cards & packaging of issue	\$75
387	<b>1942M Florin</b> PCGS MS63, Ex Vienna hoard mint roll (the end coin of the roll)	\$150	398	1988 Bi Centenary \$10 notes In original folders of issue CFU (4)	\$60
388	<b>1944M Florin</b> PCGS MS63	\$150	399	<b>1 Cent Mint Rolls</b> 1979(2), 1981 (4), 1982 (3)	\$50
389	<b>1946 Florin</b> PCGS MS63 Prooflike Unc	\$150	400	<b>2 Cent Mint Rolls</b> 1980 (2), 1981 (2) 1982	\$40
390	<b>1947 Florin</b> PCGS MS63, Very tightly graded as it looks much nicer	\$150	401	5 Cent Rolls 1980 (2), 1982 (2), 10 Cents 1980 (2), 1981 (2) Face Value \$24	\$25
391	<b>1951 Jubilee Florin</b> PCGS MS64, These are not common in this grade	\$100	402	<b>British Honduras</b> 50 Cents 1895, Extremely Fine	\$250
392	<b>1957 Florin</b> PCGS MS64	\$100	403	1933 Shilling, VG/Fine	\$125
			404	1933 Shilling, VG/Fine	\$125
			405	1925 Pennies Fine & aVF 2 coins	\$250
			406	1946 Pennies, 5 coins 2 VF, 1 avf, 2 roughies	\$200
			407	Nice run of Shillings 1943,1943S,1944,1944S,1946,1946P, 1948,1950,1952,1953,1954,1957 then 1959 to 1963,. The 1946 Perth aUnc balance Unc to Ch Unc	\$250
			408	<b>1959 Threepence</b> Proof issue, PR 64	\$75
			409	<b>Lesetho</b> , 4 coin proof set 1966 In red box of issue	\$50
			410	<b>Lesetho</b> , 4 coin proof set 1966 In red box of issue	\$50



1960 Shilling PCGS MS66

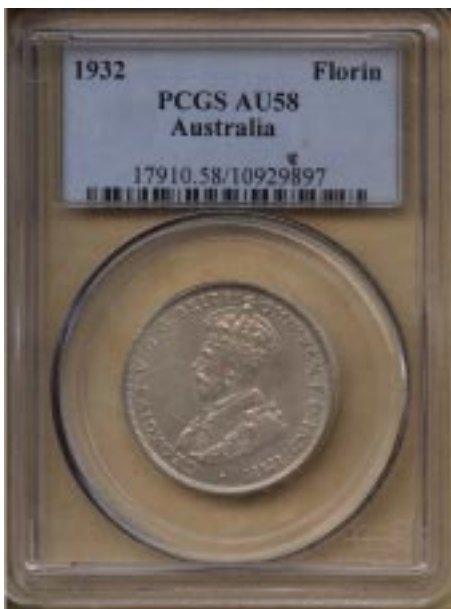


1923 Florin PCGS MS63



1928 Florin PCGS MS64

1932 Florin PCGS AU58



1927 Canberra Florin PCGS MS64

