



COINLINE AUCTIONS

Auction Number 71

To Bid Call 02 4784 2599 (24 hours)

Starts Thursday 30th August 2007 9.00am EST

Finishes Tuesday 4th September 10.00pm EST



Your 6 Digit Password Number is:

Your 4 Digit Customer Number is:

Information Call 02 4784 1470

Pacific Rim Coins Pty Ltd
PO Box 5
Wentworth Falls
NSW 2782

www.pacificrimcoins.com.au

Coinline Auction Number 71 September 2007

Welcome to Coinline Auction Number 71. The year is flying by with Christmas not far away. We will be having two more auctions this year with hopefully lots of new material. The coin market remains strong with very little better quality available. We have been purchasing some material back from long term clients much of which is presented in this catalogue.

Again if you are considering better quality coins I strongly recommend third party grading by PCGS. Please take the time to look at their site PCGS. Com or just type Professional Coin Grading Service into Google. Please also have a look at their grading standards which they consistently apply to all coins they grade (now 13 million and counting). Also the census reports are coming to shape with some meaningful statistics.

This auction again presents some great coins at I think fair prices.

- * Australian Decimal Issues with rolls, sets & cheap individual coins
- * PCGS graded decimal such as 1968 issues
- * Bulk lots & sets with a nice complete set on offer supplied in Dansco Supreme albums
- * Coins of England with a nice run of Maundy issues
- * Proclamation with outstanding Cartwheel penny & 2 penny pieces
- * Australian 1/2 Sovereigns including high graded Sydney Mints, an 1885 Melbourne in EF, 1889 S in Unc as well as now very hard to find later dates. George V in MS63 or better is really moving probably due to the internet
- * Australian Sovereigns, really at bargain prices the YH types in particular. The PCGS graded 1884M is worth a look.
- * Australian Commonwealth, section 1 has a nice 1911 shilling and a better grade 1935 Florin. The George V1 & Elizabeth is the last from one client & when sold that is expect to pay more.



*Australian Commonwealth Section 2, PCGS graded is again exceptional. High grade Commonwealth is very much on the march with demand exceeding limited supply. There are many coins out there called Gem Unc which would struggle into a PCGS MS60/61 holder. Many others would not be graded by PCGS due to cleaning, environmental damage etc. Coins graded even into MS63 holders by Australian standards are the top of the tree. Hence a 1922 sixpence in MS64 has to be now a \$10,000 + coin, a 1953 Sixpence in MS65 \$1000 +, a 1936 Shilling in MS65 \$1500 + and so on. These coins cannot be replaced in the present market, they are just not out there. There is a nice selection here & we recommend maybe adding a few coins to your collection or indeed starting a new portfolio.

Lastly if you have any question re Coinline 71 please give me a call.

I will be attending the Perth Coin Show second week of October.

Regards Chris Buesnell

| Lot | Description | Opening Bid |
|--------------------------------------|--|-------------|
| 1.1 Australian Decimal Issues | | |
| Mint Rolls | | |
| 001 | 1966 Five Cent | \$40 |
| 002 | Five Cents 1978,1979,1980,1981, 1982 Mixed 10 Rolls | \$30 |
| 003 | Five Cents 1978,1979,1980,1981, 1982 Mixed 10 Rolls | \$30 |
| 004 | Five Cents 1978,1979,1980,1981, 1982 Mixed 10 Rolls | \$30 |
| 005 | Five Cents 1978,1979,1980,1981, 1982 Mixed 10 Rolls | \$30 |
| 006 | Five Cents 1978,1979,1980,1981, 1982 Mixed 10 Rolls | \$30 |
| 007 | Ten Cents 1978,1979,1980,1981, 1982 Mixed 10 Rolls | \$60 |
| 008 | Ten Cents 1978,1979,1980,1981, 1982 Mixed 10 Rolls | \$60 |
| 009 | Ten Cents 1978,1979,1980,1981, 1982 Mixed 10 Rolls | \$60 |
| Dollar Coins | | |
| 010 | 2006 TV Dollar | \$30 |
| 011 | 2006 TV Dollar | \$30 |
| 012 | 1984 \$1 Proof (3) | \$30 |
| 013 | 1988 \$1 BU (20) | \$30 |
| 014 | 1988 \$ Specimen EX Mint Sets (10) | \$25 |
| 015 | \$2003 \$1 Unc's Suffrage (20) | \$35 |
| 016 | \$2003 \$1 Uncs Suffrage (20) | \$35 |
| 017 | \$1 Uncs 1984 (5), 1985 (11), 1986, 1988 (5), 1993 (5), 1999 (4), 2001 (10), 2002 (10),,, 2003 Kora BU | \$75 |
| RAM Sets | | |
| 018 | 1966 1 & 2c Card | \$60 |
| 019 | 1975 Proof Set | \$35 |
| 020 | 1975 Proof Set | \$35 |
| 021 | 1976 Proof Set | \$50 |
| 022 | 1976 Proof Set | \$50 |
| 023 | 1977 Proof Set | \$25 |
| 024 | 1978 & 1979 Proof Set | \$40 |
| 025 | 1979,1980,1984 Proof Set | \$45 |
| 026 | 1981 Proof Set (9) | \$125 |
| 027 | 2004 Proof Set | \$60 |
| Ten Dollar Coins | | |
| 028 | State Set, Proof 1982 to 1993 | \$150 |
| 029 | 1988 Uncirculated (3) | \$35 |
| 030 | 1996 Whale Piedfort | \$30 |
| 031 | 1996 Whale Piedfort | \$30 |
| Miscellaneous | | |
| 032 | 1998 Mint Set | \$25 |
| 033 | 1994 Masterpieces In Silver | \$75 |
| 034 | 1991 Anzac Proof Pair | \$25 |

| Lot | Description | Opening Bid |
|-----------------------------------|--|-------------|
| Decimal Singles & Sets | | |
| 035 | 1968 20c Choice Unc (5) | \$200 |
| 036 | 1968 20c Choice Unc (5) | \$200 |
| 037 | 1968 20c Choice Unc (5) | \$200 |
| 038 | 1967 20c Choice Unc (5) | \$75 |
| 039 | 1967 20c Choice Unc (5) | \$75 |
| 040 | 1968 Year Set 1c to 20c, Choice Unc | \$100 |
| 041 | 1968 Year Set 1c to 20c, Choice Unc | \$100 |
| 042 | 1966 -1991 1c & 2c Collection Housed in Dansco Supreme Album Ex Rolls & Mint Sets | \$150 |
| 043 | Decimal Collection 1966 to 1980 1c to 50c, Unc to BU | \$250 |
| PCGS Graded Decimal | | |
| 044 | 1968 1c MS66 Red | \$100 |
| 045 | 1968 2c MS65 Red | \$100 |
| 046 | 1968 2c MS65 Red | \$100 |
| 047 | 1972 5c MS65 | \$65 |
| 048 | 1970 1c PR68 Red | \$65 |
| 049 | 1970 2c PR68 Red | \$65 |
| 050 | 1968 20c MS64 | \$75 |
| 051 | 1970 50c SP68 | \$100 |
| 052 | 1966 20c PR67 | \$100 |
| 053 | 1966 10c PR67 | \$75 |
| 054 | 1974 20c PR68 | \$100 |
| 055 | 1988 50c Silver issue PR68 | \$65 |
| 056 | 1989 50c PR69 | \$65 |
| 1.2 Pre Decimal Bulk Lots | | |
| Sets | | |
| 057 | 1/2 Penny Sets 1911 to 1964 No 1923, Housed in Dansco Album Well above average | \$125 |
| 058 | 1/2 Penny sets 1911 to 1964 Average Circulated (2), no 1923 | \$175 |
| 059 | Penny Set 1911 to 1964 (no 25,30,46) | \$75 |
| 060 | Penny Set 1911 to 1964(no 25,30,46) | \$75 |
| 061 | 3 Pence & 6 Pence Complete in album, a little above average | \$150 |
| 062 | Shilling Set Complete in album | \$250 |
| 063 | Pre Decimal Collection, 1/2d (no 23), Penny (no 30), 3d , 6d , 1/-, 2/- (no cent) Above average with a few coins above average, presented in Dansco Supreme albums | \$1500 |
| Rolls | | |
| 064 | 1964, Melbourne Pennies (60 Coins) | \$100 |
| 065 | 1964, Perth Pennies (60 Coins) | \$100 |
| 066 | 1958, Sixpences (40 Coins) | \$200 |
| 067 | 1961 Florins, 20 Coins, Scarce Date | \$350 |
| 068 | 1946 Florins, 20 Coins | \$400 |

| Lot | Description | Opening Bid |
|------------------|---|-------------|
| Bulk Lots | | |
| 069 | 1953 Perth 1/2 Pennies, Ex Mint Roll 10 Coins, Choice Unc Scarce | \$150 |
| 070 | 1948 Melbourne Pennies, Uncirculated with mint Red (6) | \$75 |
| 071 | 1951 Melbourne Pennies Uncirculated with mint red (5) | \$75 |
| 072 | 1951PL Pennies Uncirculated Mostly full mint red (5) | \$75 |
| 073 | 1952 Melbourne Pennies Uncirculated with mint red (5) | \$75 |
| 074 | 1962 Sixpences BU (20) | \$40 |
| 075 | 1961 Shillings Choice Unc (20) | \$50 |
| 076 | 961 Shillings Choice Unc (20) | \$50 |
| 077 | 1962 Shillings Choice Unc (20) | \$50 |
| 078 | 1927 Canberra Florins (10) Extremely Fine or Batter, nice resale | \$100 |
| 079 | 1951PL Sixpences Choice Unc (5) | \$75 |
| 080 | 1954 Sixpences BU (10) | \$100 |
| 081 | 1938 Threepences Uncirculated (5) | \$100 |
| 082 | 1955 Threepences Choice Unc (5) | \$35 |
| 083 | 1960 Threepences BU (10) | \$25 |
| 084 | 1943D Threepences BU (5) | \$60 |

1.3 Proclamation

| | | |
|-----|---|--------|
| 085 | 1799 1/2 Penny, Outstanding Coin PCGS Graded MS66 Brown | \$400 |
| 086 | 1787 Sixpence Extremely Fine | \$65 |
| 087 | 1787 Shilling , Very Fine | \$50 |
| 088 | 1797 Cartwheel Twopence Fine | \$50 |
| 089 | 1797 Cartwheel Twopence Fine | \$50 |
| 090 | 1797 cartwheel Twopence Good very Fine & a nice coin | \$250 |
| 091 | 1797 Cartwheel Twopence Choice Uncirculated, original mint red, Very scarce in this grade | \$1500 |
| 092 | 1797 Cartwheel Penny Choice Uncirculated, Ex BA Seaby, 1950's, a lot harder coin to find than the twopence | \$1250 |
| 093 | 1790 1/2 Guinea, George 111 | \$150 |

1.4 Coins of England

| | | |
|-----|---|-------|
| 094 | Proof 1/2 Sovereign 1980 In Box of Issue (gold value) | \$100 |
| 095 | Proof Sets, 1971,1972,1973 | \$40 |
| 096 | Proof Sets 1977,1979,1980 | \$40 |
| 097 | Proof Sets 1981, 1982 | \$25 |
| 098 | Farthing Collection 1902 to 1956, Nice set gVF or better with Edwards alone cat \$137 | \$100 |
| 099 | 1/2 Penny 1729, George 11 Extremely Fine, nice type coin | \$400 |
| 100 | 1799 1/2 Penny, Very Fine | \$50 |
| 101 | 1855 1/2 Penny Uncirculated | \$75 |

| Lot | Description | Opening Bid |
|----------------------------------|---|-------------|
| 102 | 1901 1/2 Penny Choice Unc, Full mint Red | \$25 |
| 103 | 1858 Penny Extremely Fine | \$50 |
| 104 | 1900 Penny Uncirculated | \$25 |
| 105 | 1901 Penny Uncirculated | \$25 |
| 106 | 1913 Penny Uncirculated (cat 35pds) | \$35 |
| 107 | 1918 Penny Uncirculated (cat 30 pds) | \$35 |
| 108 | 1919 Penny Uncirculated (cat 30pds) | \$35 |
| 109 | 1762 Threepence, Very Fine | \$50 |
| 110 | 1901 Victoria 1/2 d, 1d & 3D Choice Uncirculated | \$75 |
| 111 | 1711 Shilling, Queen Anne, VG | \$35 |
| 112 | 1720 Shilling, George 11, Fine | \$50 |
| 113 | 1723 Shilling SSC Fine | \$50 |
| 114 | 1849 Godless Florin, VF | \$200 |
| 115 | 1936 Florin Choice Unc | \$30 |
| 116 | 1695 William 111 Guinea, Very Fine holed at top | \$400 |
| 117 | 1887 Victorian Selection 3d BU, 1/- EF, 2/- EF Double Florin Uncirculated | \$100 |
| Collection of Maundy Sets | | |
| 118 | Charles 11, Undated VF to EF , Scarce & desirable | \$750 |
| 119 | Charles 11 1677 VF to EF, very desirable dated set | \$750 |
| 120 | George 111 1792 Wire set, As Struck Uncirculated | \$800 |
| 121 | George 111 1795 As Struck Uncirculated | \$600 |
| 122 | George 111 1820 As Struck, Bull head type | \$600 |
| 123 | George 1V 1825 Uncirculated | \$400 |
| 124 | William 1111 Uncirculated | \$350 |
| 125 | Victoria 1847 As Struck Uncirculated, better date | \$600 |
| 126 | Victoria 1890 As Struck Uncirculated | \$250 |
| 127 | Victoria 1897 As Struck Uncirculated | \$250 |
| 128 | Edward VI! 1910 As Struck Uncirculated | \$200 |
| 129 | George V 1931 As Struck Uncirculated | \$200 |
| 130 | George V1 1944 As Struck Uncirculated | \$150 |
| 131 | Elizabeth 11 1966 As Struck Uncirculated | \$150 |
| Cook Medallic Collection | | |
| 132 | Voyages to Australia in Silver 10 Medals Crown sized in Album of issue, Proof Quality | \$200 |

| Lot | Description | Opening Bid |
|------------------------|--|-------------|
| 1.5 World Coins | | |
| 133 | Canada Dollars 1950, 1958 Totem & 1960 Canoe, Uncirculated | \$50 |
| 134 | Canada 1 cent, 1893 MS63 | \$75 |
| 135 | Canada 10 cent 1901, AU58 | \$100 |
| 136 | New Brunswick 1/2d & Penny 1843 VG/Fine, | \$25 |
| 137 | Canada Tokens, un sou & penny 1857, (Bank Montreal) | \$25 |
| 138 | Canada 1c 1907 PCGS MS63RB, Great type coin | \$150 |
| 139 | Canada mint set 1967, 1c to \$1 (goose dollar) Specimen | \$25 |
| 140 | Canada Year sets, 1977, 1979, 1980, 1990, 1991, also provincial 25c Collection (12 coins) & Comem set 1992 | \$35 |
| 141 | Canada Year sets 1981 + Specimen set 1992 Alberta & 1992 Commem set + 25c Collection (12 Coins) | \$35 |
| 142 | British Hoduras 50c 1895 good Very Fine, popular type coin | \$150 |
| 143 | South Africa penny 1892 gVF & florin 1897 gVF | \$25 |
| 144 | New Zealand \$5 1992 PCGS Graded PR69 | \$35 |
| 145 | New Zealand Mint Set Collection 1965 to 1992, 19 sets & does include the 1990 5 coins Waitang set | \$100 |
| 146 | New Zealand Threepence 1935 PCGS graded PR66, the proof issue & the key date, a great oportunity | \$1500 |
| 147 | New Zealand \$5 1994, Queen Mother | \$25 |
| 148 | New Zealand \$5 1995 Explorer | \$25 |
| 149 | New Zealand \$5 2000 Piedfort | \$25 |
| 150 | New Guinea Proof set 1976 High silver content | \$35 |
| 151 | South Africa proof set 1963 Includes silver issue 3d to crown. in original case of issue | \$30 |
| 152 | Jersey 1/24 & 1/12 Shillings 1907 Edward V11 Uncirculated | \$50 |
| 153 | Western Somoa \$1 1974, Boxer in proof, key date of the series | \$25 |
| 154 | Western Somoa Unc sets 1974 (4) & Fiji proof set 1980 | \$25 |
| 155 | British West Africa 1936 Edward V111 issues, 1/10 penny, 1/2 d & 1d, BU | \$35 |
| 156 | France 1c 1896 & 2c 1895 Choice Unc, nice type coins | \$35 |
| 157 | France 1c 1912 & 2c 1898 Choice Unc & nice type coins | \$35 |
| 158 | France 1cents, 1908,1916,1919 2 Cents 1902,1911, 1914, 1919 Extremely fine to Uncirculated | |

| Lot | Description | Opening Bid |
|-------------------------------|---|-------------|
| 1.6 Pre Decimal Proofs | | |
| 159 | 1962 Perth 1/2 penny PCGS PR65 Red | \$500 |
| 160 | 1963 Perth 1/2 Penny PCGS PR67 Red | \$750 |
| 161 | 1958 Perth Penny PCGS PR66 Red | \$1250 |
| 162 | 1961 Perth Penny PCGS PR67 Red | \$1000 |
| 163 | 1958 Threepence PCGS PR66 | \$165 |
| 164 | 1959 Threepence PCGS PR67 | \$175 |
| 165 | 1956 Sixpence PCGS PR66 | \$200 |
| 166 | 1958 Shilling PCGS PR66 | \$200 |
| 167 | 1963 Shilling PCGS PR67 | \$200 |
| 168 | 1955 Shilling NGC PR67 | \$300 |
| 169 | 1955 Melbourne Penny PR66 Red | \$300 |
| 170 | 1955 Melbourne Penny PR 66 Red | \$300 |
| 171 | 1958 Perth Penny PR64 Red | \$650 |
| 172 | 1958 Melbourne Penny PR 65 Red | \$250 |
| 173 | 1963 Melbourne set PCGS PR66, Evenly matched, comes with the original box of issue | \$750 |
| 1.7 Australian Gold | | |
| 1/2 Sovereigns | | |
| 174 | 1864 Sydney Mint PCGS AU 50, Lovely old gold tone enhances a fresh unmarked surface | \$5000 |
| 175 | 1866 Sydney Mint PCGS EF45, Lustre in the devices, unblemished original surfaces | \$5000 |
| 176 | 1879 Sydney PCGS EF40, Original surface typical of coins from the Reserve bank sale | \$1000 |
| 177 | 1882 Melbourne PCGS EF40, Full hairline on Victoria | \$750 |
| 178 | 1882 Sydney PCGS VF30, An oportunity to secure a key coin within a budget | \$600 |
| 179 | 1883 Sydney PCGS EF45, Full hairline with at least 50% mint lustre remaining. | \$2000 |
| 180 | 1885 Melbourne PCGS EF45, A great rarity in Australian coins, a mintage of only 11,000 | \$5000 |
| 181 | 1887 Sydney Jubilee PCGS AU 58, Great eye appeal | \$1000 |



Canada 1c 1907,
PCGS MS63



Australia 1931 Shilling
PCGS MS64



Australia 1935 Shilling
PCGS MS63



Australia 1916 Florin
PCGS MS64



Australia 1913 1/2 Penny
PCGS MS64



Australia Florin 1936
PCGS MS64



Australia Sixpence 1922
PCGS MS64



Australia Penny 1925
PCGS AU53

| Lot | Description | Opening Bid |
|-----|---|-------------|
| 182 | 1887 Melbourne Jubilee PCGS AU58 | \$1000 |
| 183 | 1889 Sydney PCGS MS60, Uncirculated & certainly a key coin, | \$5000 |
| 184 | 1893 Sydney Veil PCGS AU55, most would call Unc Lovely mint bloom | \$1500 |
| 185 | 1899 Melbourne PCGS AU50, A highly underrated date | \$750 |
| 186 | 1900 Sydney PCGS AU50 | \$750 |
| 187 | 1902 Sydney PCGS MS63 Certainly investment grade | \$1500 |
| 188 | 1908 Sydney PCGS MS62, purchased as a gem the bloom is uninterrupted & full | \$1500 |
| 189 | 1910 Sydney PCGS AU 53, problem free | \$250 |
| 190 | 1911 Perth PCGS AU58 | \$350 |
| 191 | 1914 Sydney PCGS MS63 | \$300 |
| 192 | 1915 Melbourne PCGS MS64 | \$350 |
| 193 | 1915 Sydney, Uncirculated Sovereigns | \$100 |
| 194 | 1866 Sydney Mint Extremely Fine | \$500 |
| 195 | 1872 Melbourne Good VF, Key date | \$250 |
| 196 | 1873 Sydney Ex Monetarium, good EF | \$400 |
| 197 | 1879 Melbourne Extremely fine | \$200 |
| 198 | 1879 Sydney Extremely Fine, The key date of the series | \$400 |
| 199 | 1880 Melbourne, Extremely Fine | \$200 |
| 200 | 1880 Sydney Ex Monetarium, Good EF | \$300 |
| 201 | 1883 Sydney, Extremely Fine | \$200 |
| 202 | 1884 Melbourne, Extremely Fine | \$200 |
| 203 | 1873 Sydney Shield Nearly Uncirculated | \$400 |
| 204 | 1879 Sydney Shield Extremely Fine | \$300 |
| 205 | 1883 Sydney Shield Extremely Fine | \$250 |
| 206 | 1886 Sydney Shield Uncirculated | \$750 |
| 207 | 1912 Sydney, Uncirculated | \$200 |

| Lot | Description | Opening Bid |
|-----|---|-------------|
| | Sovereigns PCGS Graded | |
| 208 | 1884 Sydney Young Head PCGS MS64, Near Perfect Gem | \$3000 |
| 209 | 1886 Melbourne Young Head PCGS MS62 (ret \$1700) | \$1000 |
| 210 | 1888 Sydney PCGS MS 62, Virtually a gem | \$1000 |
| 211 | 1892 Sydney Jubilee PCGS MS62 as above | \$1000 |
| 212 | 1901 Melbourne PCGS AU 55 | \$225 |
| 213 | 1907 Sydney PCGS MS63 | \$450 |
| 214 | 1908 Perth PCGS MS 62 | \$275 |
| 215 | 1915 Sydney PCGS MS63 | \$250 |
| | 1.7 Australian Commonwealth | |
| | Crowns | |
| 216 | 1937, Good Extremely Fine | \$35 |
| 217 | 1938, Good Very Fine | \$150 |
| | Florins | |
| 218 | 1910 Very Fine | \$200 |
| 219 | 1910 Uncirculated Lightly Cleaned | \$1000 |
| 220 | 1914 Nearly Uncirculated very Underrated date | \$650 |
| 221 | 1916, Pleasant Good EF | \$200 |
| 222 | 1917, Extremely Fine | \$100 |
| 223 | 1926, Nearly Uncirculated Scarce date | \$400 |
| 224 | 1927 Canberra, Choice Unc | \$100 |
| 225 | 1927, Extremely Fine | \$75 |
| 226 | 1927 VF, 1928 Good VF | \$50 |
| 227 | 1933 Extremely Fine Nice bloom with sharply struck ob- verse, nice clear 8 pearls | \$650 |
| 228 | 1934, good VF with lustre | \$25 |
| 229 | 1935, Gem Uncirculated Probably rate a MS63 or slightly better | \$1500 |
| 230 | 1936, Gem Uncirculated As Above | \$350 |
| 231 | 1942 San Fran Cisco Brilliant Unc | \$100 |
| 232 | 1943, Choice Uncirculated, Ex Roll | \$50 |
| 233 | 1944 san Fran Cisco, BU | \$50 |
| 234 | 1945, Choice Uncirculated, ex Roll | \$150 |
| 235 | 1946 & 1947 Ch Unc Ex Rolls | \$75 |
| 236 | 1946 Choice Unc Ex Rolls (5) | \$125 |
| 237 | 1953, Brilliant Unc | \$50 |
| 238 | 1956, Choice Unc | \$125 |
| 239 | 1957,1960 & 1961 Choice Unc & very hard to improve | \$75 |

| Lot | Description | Opening Bid |
|-----|--|-------------|
| 240 | 1951 Jubilee & 1954 Royal Visit Both Choice Unc, Ex Rolls | \$100 |
| 241 | Elizabeth 11 Collection 1953- 1963 In Supreme sheet, Choice Uncirculated, includes Commems Shillings | \$300 |
| 242 | 1911, Uncirculated Totally original with superior obverse strike, nice coin | \$1500 |
| 243 | 1914, Uncirculated A little softly struck, however original and a scarce date | \$750 |
| 244 | 1916 & 1917 Extremely Fine | \$75 |
| 245 | 1917, Good EF | \$50 |
| 246 | 1920, Good EF, full lustre | \$250 |
| 247 | 1925, Extremely Fine | \$35 |
| 248 | 1928, Extremely Fine Scarce date, this coin fresh | \$150 |
| 249 | 1931, Extremely Fine | \$50 |
| 250 | 1933 About Fine/Fine | \$125 |
| 251 | 1934, Extremely Fine | \$50 |
| 252 | 1935 Extremely Fine | \$25 |
| 253 | 1916 & 1936 Extremely Fine | \$50 |
| 254 | 1939, Uncirculated | \$100 |
| 255 | 1941 Uncirculated | \$65 |
| 256 | 1942S Choice Uncirculated | \$50 |
| 257 | 1942 Uncirculated | \$50 |
| 258 | 1943s & 1944S Choice Uncirculated | \$50 |
| 259 | 1943M Choice Uncirculated | \$150 |
| 260 | 1946 Uncirculated | \$35 |
| 261 | 1948 Uncirculated | \$35 |
| 262 | 1950 Uncirculated | \$35 |
| 263 | 1952 Uncirculated | \$25 |
| 264 | 1953 Choice Uncirculated | \$40 |
| 265 | 1955 Gem Uncirculated | \$65 |
| 266 | 1958 Gem Uncirculated | \$30 |
| 267 | 1938 to 1952 , 1938 is Unc balance VF to EF in Dansco supreme page Sixpences | \$75 |
| 268 | 1912, Extremely Fine | \$250 |
| 269 | 1916, Good VF with lustre | \$75 |
| 270 | 1917, Good Extremely Fine | \$250 |
| 271 | 1918, Nearly Uncirculated Full apex to star, with original mint bloom | \$750 |
| 272 | 1925, Uncirculated | \$500 |
| 273 | 1927, About unc/Unc | \$50 |
| 274 | 1926 & 1935 good VF | \$50 |
| 275 | 1936, Extremely Fine | \$25 |
| 276 | 1938, Choice Uncirculated | \$75 |
| 277 | 1942D, Choice Uncirculated | \$25 |
| 278 | 1942M, Choice Uncirculated | \$50 |

| Lot | Description | Opening Bid |
|-----------------------------|--|-------------|
| 279 | 1945, Gem Uncirculated | \$50 |
| 280 | 1948, Choice Uncirculated | \$100 |
| 281 | 1950, Uncirculated | \$25 |
| 282 | 1951PI Gem Unc | \$25 |
| 283 | 1951 Uncirculated | \$25 |
| 284 | 1955 Gem Uncirculated | \$35 |
| 285 | 1953 To 1963 Elizabeth 11 Set Choice Uncirculated including the 1953 Threepences | \$500 |
| 286 | 1917, Uncirculated | \$150 |
| 287 | 1924, Extremely Fine | \$50 |
| 288 | 1926, Uncirculated | \$100 |
| 289 | 1927, About Uncirculated | \$35 |
| 290 | 1934, Uncirculated | \$100 |
| 291 | 1935, Extremely Fine | \$25 |
| 292 | 1938 Choice Uncirculated | \$50 |
| 293 | 1939, Choice uncirculated | \$100 |
| 294 | 1940, Choice Uncirculated | \$100 |
| 295 | 1947, Uncirculated, Prooflike | \$75 |
| 296 | 1953 to 1963 Elizabeth Set Choice uncirculated with 1955 on Exceptional Pennies | \$150 |
| 297 | 1950, Struck with large lip | \$100 |
| 298 | 1962, die rotation (3) | \$100 |
| 299 | 1919 Plain, Red & Brown Unc | \$150 |
| 300 | 1919 Dot Below Red & Brown Unc | \$150 |
| 301 | 1933, Uncirculated | \$100 |
| 302 | 1935, Choice Uncirculated | \$150 |
| 303 | 1952, Gem Uncirculated | \$75 |
| 304 | 1953 Full Red Unc Halfpennies | \$50 |
| 305 | 1911, Extremely Fine | \$25 |
| 306 | 1938, Choice Uncirculated | \$50 |
| 307 | 1963 Proof | \$200 |
| 1.8 Australian Coins | | |
| PCGS Graded | | |
| 308 | 1937 Crown PCGS MS61 | \$100 |
| 309 | 1938 Crown PCGS AU58, Full mint Bloom | \$400 |
| 310 | 1938 Crown PCGS MS63, The nicest I've offered | \$1750 |
| 311 | 1910 Florin PCGS AU55, Nice coin | \$1000 |
| 312 | 1911 Florin PCGS AU58, just touched of from Unc | \$1500 |
| 313 | 1916 Florin PCGS MS64, Outstanding Gem coin | \$4000 |
| 314 | 1925 Florin PCGS MS 62, Nice coin | \$1500 |

| Lot | Description | Opening Bid |
|-----|---|-------------|
| | PCGS Graded Continued | |
| 315 | 1926 Florin PCGS MS64, Lovely gem, highly rated both as a type & date coin | \$5000 |
| 316 | 1927 Canberra Florin PCGS MS64, Beautiful piece | \$400 |
| 317 | 1931 Florin PCGS MS64, Outstanding Gem | \$1000 |
| 318 | 1936 Florin PCGS MS64, Outstanding Gem | \$650 |
| 319 | 1938 Florin PCGS MS64, Beautiful & problem free | \$350 |
| 320 | 1940 Florin PCGS MS63, Great coin & so far the best I've found to grade | \$300 |
| 321 | 1941 Florin PCGS MS63, As Above | \$200 |
| 322 | 1945 Florin PCGS MS63 A key date & in this grade scarce | \$250 |
| 323 | 1946 Florin PCGS MS63 Ex Mint Roll | \$75 |
| 324 | 1946 Florin PCGS MS64 Ex Mint Roll, A gem | \$125 |
| 325 | 1947 Florin PCGS MS64 Ex Roll a gem | \$150 |
| 326 | 1951 Florin PCGS MS64 Flashy gem lustre, rare this grade | \$250 |
| 327 | 1951 Jubilee PCGS MS64, Ex Roll | \$100 |
| 328 | 1954 Royal Visit PCGS MS62 | \$50 |
| 329 | 1954 Royal Visit PCGS MS64 | \$100 |
| 330 | 1911 Shilling PCGS MS62, Choic Unc | \$2500 |
| 331 | 1916 Shilling PCGS MS64, A Gem | \$1000 |
| 332 | 1917 Shilling PCGS MS 64 A Gem | \$1000 |
| 333 | 1918 Shilling PCGS MS62, Choice Unc | \$650 |
| 334 | 1924 Shilling PCGS AU 55 | \$500 |
| 335 | 1931 Shilling PCGS MS 64, Highly underrated coin, one of the finest known | \$1500 |
| 336 | 1934 Shilling PCGS MS64, As Above | \$1500 |
| 337 | 1935 Shilling PCGS MS63, A Gem | \$1000 |
| 338 | 1936 Shilling PCGS MS65, Lovely Gem, rare this grade, The best I've offered | \$1500 |
| 339 | 1938 Shilling PCGS Graded MS64 | \$300 |

| Lot | Description | Opening Bid |
|-----|--|-------------|
| 340 | 1939 Shilling PCGS MS64 | \$500 |
| 341 | 1940 Shilling PCGS MS64, One of the finest know, Ex gates Collection | \$2000 |
| 342 | 1941 Shilling PCGS MS62 | \$150 |
| 343 | 1943 Shilling PCGS MS64 | \$500 |
| 344 | 1946 Perth Shilling PCGS MS64 | \$1000 |
| 346 | 1946 Shilling PCGS MS64 | \$200 |
| 347 | 1953 Shilling PCGS MS63 | \$75 |
| 348 | 1911 Sixpence PCGS MS65, Absolutly beautiful coin, One of the finest known | \$6500 |
| 349 | 1912 Sixpence PCGS MS63, rare date & one of the finest known | \$5000 |
| 350 | 1918 Sixpence PCGS AU58 | \$2000 |
| 351 | 1919 Sixpence PCGS MS64, One of the finest known | \$5000 |
| 352 | 1921 Sixpence PCGS MS64, gem | \$2000 |
| 353 | 1922 Sixpence PCGS MS64, One of the finest known of this rare date | \$10,000 |
| 354 | 1926 Sixpence PCGS MS64 | \$1000 |
| 355 | 1941 Sixpence PCGS MS65, The nicest i've offered | \$350 |
| 356 | 1953 Sixpence PCGS MS65 Perfect | \$1000 |
| 357 | 1958 Sixpence PCGS MS65 | \$100 |
| 359 | 1910 Threepence PCGS MS64 | \$250 |
| 360 | 1921 Threepence No M PCGS MS61, Flashy Unc | \$1200 |
| 361 | 1934/33 Overdate Threepence PCGS AU50, Very clear overdate | \$1000 |
| 362 | 1943D Threepence PCGS MS65 | \$100 |
| 363 | 1953 Threepence PCGS MS65, Perfect | \$300 |
| 364 | 1955 Threepence PCGS MS65 | \$65 |
| 365 | 1911 Penny PCGS MS65 Red | \$2000 |
| 366 | 1917 Penny PCGS MS64 Brown, Perfect Surface | \$1500 |
| 367 | 1922 Penny PCGS MS64 Red & Brown, for colour one of the finest known | \$2500 |

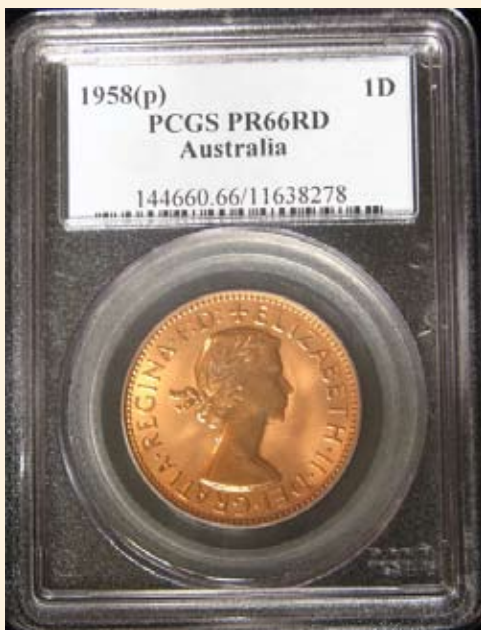
| Lot | Description | Opening Bid | Lot | Description | Opening Bid |
|-----|---|-------------|-----|--|-------------|
| 368 | 1923 Penny PCGS MS61 Brown | \$1000 | | Late Lots | |
| 369 | 1925 Penny PCGS AU53, Nowdays a very popular coin, good value | \$2500 | 395 | 1917 Florin Uncirculated, dipped | \$500 |
| 370 | 1929 Penny PCGS MS65 Brown, Ex Remmick | \$2750 | 396 | Cook Islands Maundyb set 2002, Golden jubilee prof in plush case of issue | \$100 |
| 371 | 1938 Penny PCGS MS63 red, Beautiful Coin | \$250 | 397 | Melbourne Centenary Foys bag Very Good | \$40 |
| 372 | 1939 Penny PCGS MS63 Brown, Scarce date | \$100 | 398 | 1977 Jubilee 50c Mint Roll | \$25 |
| 373 | 1940 Penny PCGS MS63 RB Scarce | \$450 | 399 | 1899 Perth Sovereign Extremely Fine & Scarce | \$350 |
| 374 | 1942Y penny PCGS MS65 Brown | \$300 | 400 | 1797 1/2 Jenny &2D Rough condition, probably used in early pavement games | \$50 |
| 375 | 1944Y Penny PCGS MS64 Brown | \$200 | 401 | Elizabeth 11 Collection of Silver 1953 to 1963, 3d, 6d, 1/- & 2/- housed in attractive Supreme album Choice Uncirculated | \$1500 |
| 376 | 1945Y Penny PCGS MS63 Brown | \$250 | 402 | GB Pennies 1936, Ch Unc, 1937 & 1953 Brilliant full red | \$25 |
| 377 | 1946 Penny PCGS MS60 Brown, Again a nice Unc coin with some red on reverse | \$1000 | 403 | GB Henry V1 1/2 Groat issued in cal-ais 1422 & Unidentified crusader coin | \$100 |
| 378 | 1956 Penny PCGS MS64 Red | \$150 | 404 | Ancient Sassanian (590-627) Drachms Fine/VF (3) | \$90 |
| 379 | 1959 M Penny PCGS MS64 RB | \$250 | 405 | Selection of Roman Bronzes , mostly low grade however collectable (12) | \$60 |
| 380 | 1960 Penny PCGS MS64 RB | \$100 | 406 | Jersey 1/26 Shilling 1844, Uncirculated | \$50 |
| 381 | 1964M Penny PCGS MS64 Red | \$35 | 407 | 1969 1 Cent PCGS Graded PR69 Red | \$65 |
| 382 | 1911 1/2 Penny PCGS MS65 Red | \$1000 | 408 | 1969 2 cent PCGS Graded PR68 Red | \$65 |
| 383 | 1913 1/2 penny PCGS MS64 RB | \$1000 | 409 | 1970 10 Cent PCGS Graded PR68 | \$65 |
| 384 | 1919 1/2 Penny PCGS MS64 RB | \$750 | 410 | 1971 1 Cent PCGS PR68 | \$65 |
| 385 | 1921 1/2 Penny PCGS MS64 RB | \$750 | | | |
| 386 | 1923 1/2 Penny PCGS VF 30, Good value | \$3500 | 411 | 1971 2 Cent PCGS PR68 | \$65 |
| 387 | 1931 1/2 Penny PCGS MS64 Brown, Supurb Coin | \$3500 | 412 | 1966 2 Cent PCGS PR 66 Red | \$75 |
| 388 | 1938 1/2 Penny PCGS MS64 RB | \$150 | 413 | 1966 1 Cent PCGS PR67 Red | \$75 |
| 389 | 1939 1/2 Penny Roo Type PCGS MS64 RB, Great Coin | \$3000 | 414 | 1991 \$200 Proof, Emu PCGS PR69 Deep Cameo | \$300 |
| 390 | 1945 1/2 Penny PCGS MS 64 RB | \$350 | 415 | 1992 \$200 Proof PCGS PR69 Deep Cameo | \$300 |
| 391 | 1946 1/2 Penny PCGS MS 64 Brown Ex Roll | \$150 | 416 | 1966 20 Cents PCGS PR65 Deep cameo | \$100 |
| 392 | 1951Y 1/2 Penny PCGS MS64 RB | \$150 | 417 | 1954 Sixpence PCGS MS64 | \$35 |
| 393 | 1953 1/2 Penny PCGS MS 64 RB | \$100 | 418 | 1960,1961,1962 Shillings PCGS MS64 | \$75 |
| 394 | 1962 1/2 Penny PCGS MS64 RB | \$65 | 419 | 1959 Shilling PCGS MS65 Scarce | \$65 |
| | | | 420 | GB Crown Selection , 1935 to 1981 First VF balance Specimen to BU | \$65 |



New Zealand Threepence
1935 PCGS PR66



Australia 1/2D 1963P
PCGS PR67



Australia Penny 1958 P
PCGS PR66 Red



Australia 1/2 Sovereign
1889 Sydney PCGS MS60