



Auction Number 79

COINLINE AUCTIONS

To Bid Call 02 4739 0547 (24 hours)

**Starts Thursday 15th January 9.00am EST
Finishes Tuesday 20th January 2009 10.00pm EST**

Information Call 02 4784 1470
or 02 9223 2646

Your 6 Digit Password Number is:

Your 4 Digit Customer Number is:

Pacific Rim Coins Pty Ltd
PO Box 5
Wentworth Falls
NSW 2782

Coinline Auction Number 79 January 2009

Welcome to auction number 79, the first for calendar year 2009. We have now moved in to our new retail premises at the Hunter Connection Pitt Street in Sydney. If you are a local please drop by and say Hello & if visiting Sydney pencil in a visit. We have an extensive stock portfolio with plenty of high grade Australian, GB & World coins. We have started putting stock on our website. Have a look at pacificrimcoins.com.au.

While on the Internet browse the PCGS website. The population report on Australian coins is worth a look as is the set registry. The latter at time of writing has been active for 10 days or so and there are already 55 registered sets in the Australian section. This will revolutionise the Australian market with a marked difference in prices for PCGS graded coins & non graded material.

This Coinline auction encompasses a broad range of material. We managed to acquire a reasonable British collection put together over quite a long period. It is conservatively graded & quite good buying. Compare prices to any of the British websites for similar coins.

The Australian market seems strong with the last few auctions basically selling out with good prices overall. The prices of nice coins in the long term will compare with any investment asset.

If you have any questions regarding lots give me a call. Contact numbers are work hours 9223 2646, After Hours 0400 378 588. Please note our new Bidder number.

We will be attending a number of shows this year. The Perth show in February will be the first. Drop by & say hello. If you have any coins you wish to be graded bring them along.

Lastly thank you for your support through 2008 and best wishes for 2009.

Regards Chris Buesnell



Photo

Viewing

Shop 8, 109 Pitt St Sydney
Phone 9223 2646

Postage

All items sent registered mail. Postage charged at cost.

Returns

Must be in original holder. All sales 21 after close of auction final.

Grading Standards.

See PCGS .Com - Grading Standards

Insurance

Coins are insured this end & included in postage.

Bidding

Please bid early if possible. Bidding is set at 5% increments

10iT

Lot	Description	Opening Bid
Australian Mint Product		
001	1993, Baby Mint Set	\$25
002	1994, Baby Mint Set	\$25
003	1974, Mint Set	\$40
004	1986, Mint Set	\$15
005	1989, Mint Set	\$25
006	1990, Mint Set	\$75
007	1992, Mint Set	\$40
008	1994, Mint Set	\$20
009	1998, Mint Set	\$25
010	1999, Mint Set	\$30
011	2001, Mint Set	\$35
012	2003, Mint Set	\$25
013	1993, \$1 Unc, M, S, C & Plain	\$15
014	1992, Barcelona \$1 Unc	\$50
015	1994, Commem \$1, C, S & M	\$20
016	1995, Matilda \$1, C, S, M & B	\$75
017	1996, Parkes \$1 S, C, M & B	\$30
018	1997, Smithy \$1, C, M, B, A & S	\$60
019	1998, Fleming \$1 C, B, M	\$15
020	1999 Anzac B, S, A & M	\$75
021	2001, Air Force	\$12
022	2001, Army	\$12
023	Five coin set Dollar set, card of issue	\$50
024	1975 Proof Set, Perfect	\$35
025	1976 Proof Set, Perfect	\$50
026	1977 Proof Set, Perfect	\$25
027	1978 Proof Set, Perfect	\$25
028	1980 Proof Set, Perfect	\$25
029	1966 Proof set Box, Nice Condition	\$50
030	\$10 Uncs 1982 (2), 1986 (1)	\$35
031	\$10 Uncs 1985,87,89,90,91,92 Six Coins altogether	\$70
032	1993 \$10, Uncirculated Scarce (2)	\$30
033	1986 Uncirculated \$10 (2)	\$22
034	1982 Proof \$10	\$10
035	1985 Proof \$10	\$10
036	1989 Proof \$10	\$10
037	1990 Proof \$10	\$10
038	1990 Proof \$10	\$10
039	1991 Proof \$10	\$10
040	1993 Proof \$10	\$25
041	1984 Proof \$1	\$6
042	2006 \$1 Proof, TV Anda MM	\$20
043	1987 Proof \$10	\$15
044	1985 & 1988 \$10 Uncs	\$22
045	Complete set \$10 Proofs in the box of issue (8 Coins)	\$100

Lot	Description	Opening Bid
046	Endangered Species, Numbat & Whale, in Box	\$25
047	Endangered Species Whale Piedfort	\$30
048	1996, 30th Anniversary Dec Currency	\$30
049	1994 \$5 Proof, Enfranchisement	\$15
050	1998 \$1 Parliament 10 Years on	\$25
051	1992 \$5 Year Space, Proof	\$15
052	1997 \$1 Proclamation, Proof	\$25
Decimal Singles		
053	1968 1c, Full Red Unc	\$25
054	1968 1c, Full red Unc	\$25
055	1967 2c BU + 1968 2c Unc (ugly)	\$25
056	10c Proofs 1975,1976,1977,1978, 1979,1980,1981	\$20
057	20c Proofs 1975,1976,1977,1978,1979 1980,1981	\$20
058	Five Cent Collection 1966 to 1984 All Choice unc to BU, Nice lot & includes the 1972	\$50
059	Ten Cent Collection 1966 to 1981 All Choice Unc to BU & includes scarce 1968,1971,1972 & 1973	\$50
060	Twenty Cent Coins 1967 Unc, 1969,1970,1972, Then 1974 to 1982 & a 1984 all Choice Unc	\$65
061	Fifty Cent Collection 1966 to 1980 includes Scarce 1971,72 & 1973 Choice Unc with no bagmarks These put away at time of issue	\$100
062	Fifty Cents 1966,69,70,71 Choice Unc, Mint roll quality	\$30
063	1973 Fifty Cent, Choice Unc	\$40
064	1974 Fifty Cent Choice Unc	\$15
065	1975 & 1976 Fifty Cent Choice Unc	\$15
066	Fifty Cents 1977,78,79,80,82 Ch Unc	\$20
067	Fifty Cents 1983,84,85,86,97,88,89,90 All Gem Unc	\$75
068	Fifty Cents 1991,93, 94 Fam- ily,95,96,97,98,99, All Choice to Gem	\$65
Australian Bulk Lots & Sets		
069	Threepence set Complete 1910 to 64	\$50
070	Sixpence Set, Complete 1910 to 1963	\$75
071	1/2 Penny Set (no 23) Well above average set, 27 EF, 28 EF, several in 40's with lustre	\$150
072	1/2 Penny Set (no 23) nice above average set	\$100
073	1945 1/2d (47), 1945P 1/2d 40	\$100
074	1942M Threepence (8), Good Fine	\$120
075	1953 Perth 1/2D, Ch Unc Ex Roll (10)	\$125
076	1951 Perth 1/2 Penny Ch Unc (10)	\$125
077	1961 1/2 Penny Ch Unc (10)	\$15
078	1962 1/2 Penny Ch Unc (5) Scarce	\$20
079	1951PI 1/2d Unc to Ch Unc (10)	\$75
080	1943M 1/2 Penny Unc to Ch Unc (10)	\$100
081	1938 Pennies aUnc to Unc (5)	\$75

Lot	Description	Opening Bid
082	1939 Pennies, aUnc to Unc (5)	\$100
083	1943S Shillings, Choice Unc (10)	\$125
084	1944S Shillings, Choice Unc (5)	\$75
085	1952 Shillings, Choice Unc (5)	\$75
086	1953 Shillings, Choice Unc (5)	\$75
087	1957 Shillings, Choice to Gem (12)	\$125
088	1961 Shillings Choice to Gem Unc (100) coins	\$300
089	1962 Shillings Choice to BU (40)	\$125
090	1926 Pennies (10), 1959M Pennies (10) Average circulated	\$50
091	1926 Pennies (10), 1915H Pennies (10) Average circulated	\$65
092	1918 Pennies (5), 1926 Pennies (5) 1915H Pennies (5), 1959 Pennies (5) all average circulated	\$65
093	Pennies 1918,1926,1931,1915H Five of Each, all average circulated	\$65
094	Pennies 1959M (6), 1926 (5), 1931 (3) 1915H (3) Average Circulated	\$50
095	1961 Florins (20) All Choice to Gem & Ex mint Rolls	\$200
096	1961 Florins (20) All choice to Gem & ex mint Rolls	\$200
097	1961 Florins (10) All choice to gem & Ex mint Rolls	\$100
098	1958 Florins, Choice Unc (6)	\$100
099	1960 Florins Choice Unc & Ex mint Rolls (18 Coins)	\$180
100	1958 Sixpences Choice To gem Unc & all ex broken mint rolls (40 Coins)	\$160
101	1958 Sixpences, Choice to gem Unc & all ex broken mint Rolls (40 Coins)	\$160
New Zealand Coins		
102	Halfpenny Collection 1940 to 1965 Unc from 1957 on, Balance VF or Better 45,46,52,53 with lustre	\$50
103	penny Collection 1940 to 1965 Above average, 63,64,65 BU, 53 Unc, Lustre on 47,49,51,52,46	\$75
104	1940 1/2 Crown, 1953 Crown & 1949 Crown, Choice Unc	\$75
105	1940 1/2 Crown, 1953 Crown & 1949 Crown, Choice Unc	\$75
106	1963 Set Penny to 1/2 Crown, gem Unc	\$25
107	1935 Sixpence, Uncirculated & the key Date (cat 400 NZ)	\$150
108	1947 Sixpence Uncirculated	\$25
109	1936 Sixpence Extremey Fine	425
110	1937 Sixpence, gem Unc	\$125
111	1944 Shilling, EF	\$25
112	1944 Florin EF & The key Date	\$50
113	1950 Penny Choice Unc, 1945 1/2 CN Extremely Fine	\$50
South African Coins		
114	1963 Proof set, Values to Crown in original blue case of issue	\$35

Lot	Description	Opening Bid
115	SA Threepence Collection 1927 to 1963, missing 4 Common dates only 30 Coins Fine to Unc	\$35
116	1923 Farthing, Proof issue FDC	\$150
117	1923 1/2 Penny, Proof issue, FDC	\$150
118	1923 Penny, Proof issue, FDC	\$150
119	1923 Threepence, Proof Issue, FDC	\$150
120	1923 Sixpence, proof issue, FDC	\$150
121	1923 Shilling, Proof Issue, FDC	\$150
122	1923 1/2 Crown, Proof Issue, FDC	\$200
Coins of England		
Bulk Lots		
123	1/2 Pennies, William & Mary, William 111, 1700 (f/VF) & 1701 other William 111 2 coins dates worn	\$50
124	1/2 Pennies George 11 1740's only Fair Condition (3 Coins)	\$10
125	1/2 Pennies 1799, 1806 & 1807 Fine and presentable	\$25
126	1/2 Pennies 1825 VF, 1826 Fine & 1827 Fair	\$25
127	1/2 Pennies 1831 VF, 1834 Fine & 1837 VF & Scarce	\$50
128	Collection of Victorian 1/2 Pennies 1838 to 1858, missing 1845 only The 1843 only VG but the balance on average VF, cat 200 Pounds + 16 Coins	\$175
129	Collection of British 1/2 Pennies Complete 1860 to 1967 Highly desirable & a well above average lot, Victorian are basically fine to VF, Edwards & later VF or better (the 1869 is a spacefiller only), Seldom offered as a single collection in Australia	\$250
130	Victorian Pennies 1841,44,45,46,47,48,49,51,53,54,55,55ot,56PT,57PT,58,58 WW,58W,58over7,59LD 23 Coins mostly Fine to VF	\$250
131	Victorian Pennies 1860 to 1901 Missing 1868,1870,74H,75H,81H,82h Otherwise complete & well above average (1869 Good)	\$150
132	Pennies 1902 to 1910 Includes both 1902 types, VF to EF the 1907 & 1910 Uncirculated	\$100
133	Pennies 1911 to 1967 Complete (no 26 Mod Effigy) Above average with the 1918 KN VF (cat 70pds) George V aUnc, includes 1912,13,21,22,27 the 50 & 51 EF	\$250
134	Gothic Florins 1866,1872,1873,1878,1883, VG to Fine & presentable	\$100
135	Jubilee Florin Collection 1887 to 1892, Nice lot Average VF with the 1891 Cat 50 Pds	\$125
136	Veil Head Florin Collection 1893 to 1901 Average Fine with the 1900 EF Cat 40pds on it's own	\$100

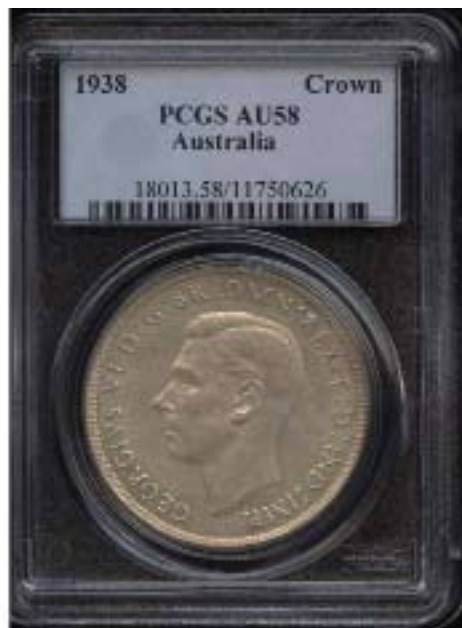
Lot	Description	Opening Bid	Lot	Description	Opening Bid
137	Edward V11 Florin Collection 1902 to 1910, The 1902 ,04,05,06 & 09 are Fine, Balance are Good VF Cat 200 Pounds, the 05 rare	\$200	166	1/2d 1736, good Fine	\$30
138	Lovely George V Florin Collection 1925 is VF, 1932 Fine, many Premium Coins 11 aUnc,12 EF, 14EF,15 EF, bal- ance mostly EF to aUnc, Attractive & hard to emulate Cat a Conservative 500 Pounds	\$500	167	1/2d 1737, fine	\$35
139	George V1 Florin Collection 1937 to 1952 VF to Unc , Unc Dates include 37,38,39,44,45,46,47,48,49, 50,51 nice lot	\$150	168	1/2d 1738, Fine	\$35
140	Elizabeth 11 Florin Collection 1953 to 1967 VF to Unc	\$25	169	1/2d 1739, Very Fine	\$100
141	Jubilee 1/2 Crown Collection 1887 to 1892 , the 1887 EF balance Fine to VF, quite Collectable	\$100	170	1/2d 1740, Good Fine	\$30
142	Veil Head 1/2 Crown Collection 1893 to 1901, The 1897 is EF balance a little better than Fine, Still quite collectable	\$125	171	1/2d 1743, Fine	\$25
143	Edward V11 1/2 Crowns 1902, 03, 06, 07, 08 ,09, 10, Fine to VF Cat 150 Pds	\$150	172	1/2d 1744, Very Fine	\$75
144	George V 1/2 Crown Collection 1911 to 1936 Complete , Nothing below VF total cat Value of 400 Pds+ the 1925 is VF, very nice lot	\$500	173	1/2d 1748, Fine	\$25
145	George V1 1/2 Crown Collection 1937 to 1951 , VF to EF	\$75	174	1/2d 1750, Very Fine	\$150
146	Elizabeth 11 1/2 Crown Collection 1953 to 1967 VF to aUnc	\$25	175	1/2d 1752, Fine	\$40
	Single Lots		176	1/2d 1753, Fine	\$25
147	1/3 Farthing 1878 , Full red Gem Cat 75 Pds	\$100	177	1/2d 1754, GFine	\$50
148	1/3 Farthing 1913, Full red Gem Cat \$30pds	\$50	178	1/2d 1770, Good VF	\$100
149	Farthing, 1771 George 111 Choice Unc , original mint red	\$350	179	1/2d 1771, Fine	\$30
150	Farthing 1893, Choice Unc Original mint red	\$50	180	1/2d 1774, Fine	\$30
151	Farthing 1893, Choice Unc, As Above	\$50	181	1/2d 1775, Good EF	\$150
152	1/2 D, 1717, Fine, Dump Issue	\$50	182	1/2d 1799, VF	\$25
153	1/2d, 1719, VG	\$30	183	1/2d 1806 EF	\$50
154	1/2d, 1720, VG	\$30	184	1/2d 1831, Good VF	\$40
155	1/2d, 1721, Good	\$10	185	1/2d 1841, Nice Brown aUnc	\$50
156	1/2d 1722, VG/Fine	\$40	186	1/2d 1854, Nice Brown aUnc	\$50
157	1/2d, 1723 Good	\$25	187	1/2d 1855, Nice Brown aUnc	\$50
158	1/2d, 1724 Good fine	\$50	188	1/2d 1857 Brown Uncirculated	\$100
159	1/2d, 1729 Nearly EF	\$200	189	1/2d 1860 , EF with Mint Red	\$50
160	1/2d 1730 Very Fine	\$150	190	1/2d 1881 Choice Unc Cat 175 PDS	\$225
161	1/2d 1731, VG	\$15	191	1/2d 1887 YH Choice Unc	\$150
162	1/2d, 1732 VG	\$25	192	1/2d 1891 EF	\$50
163	1/2d , 1733 VF	\$100	193	1/2d 1895 Choice Unc	\$50
164	1/2d 1735 Nearly VF	\$50	194	1/2d 1901 Uncirculated	\$10
165	1/2d 1734, good Fine	\$25	195	1/2 1902 Low Tide Uncirculated Rare coin Cat 275 Pds	\$300
			196	1/2d 1925 Choice Unc & Scarce	\$100
			197	1/2d 1926, Choice Unc & Scarce	\$75
			198	1827 Penny, Good	\$100
			199	1860 Penny, Very Fine	\$25
			200	1861 Penny, Very Fine	\$35
			201	1867 Penny, Very Fine	\$25
			202	1868 Penny, Very Fine	\$50
			203	1870 Penny Extremely Fine Cat 125 pds	\$125
			204	1874H Penny Very Fine	\$35
			205	1875 Penny, Nearly EF	\$40
			206	1875H Penny , Fine	\$50
			207	1881 H Penny, Very Fine	\$25
			208	1882H Penny, Very Fine	\$30
			209	1891 Penny, Pleasant EF	\$50
			210	1895 Penny Choice Unc	\$75
			211	1901 Penny Uncirculated	\$15
			212	1902 Penny Choice Unc	\$65



1955 Proof Halfpenny



1937 Crown, PCGS MS64



1938 Crown, PCGS AU58



1956 Sixpence, PCGS MS64



1943D Sixpence, PCGS MS66



1912H Halfpenny, PCGS MS64Red



1916 Shilling, PCGS MS64



1942 Shilling, PCGS MS64



1951PL Penny, PCGS MS65 Red

Lot	Description	Opening Bid
213	1926 Penny, Extremely Fine	\$50
214	1929 Penny, Full Red Unc	\$40
215	1950 Penny, Proof	\$40
216	1951 Penny, Proof	\$50
217	1953 & 1970 Pennies Proof	\$10
218	1693 William & Mary Sixpence Virtually As Struck, Ext Fine	\$850
219	Charles 11 Sixpence 1679, gVF with the reverse EF, As Struck	\$600
220	1887 Shilling Choice Uncirculated	\$50
221	Victorian 1949 Godless Florin Very Fine	\$50
222	1879 Gothic Florin , aVF/VF	\$75
223	1880 Gothic Florin, Very Fine	\$75
224	1883 Gothic Florin Choice Unc, nice type coin	\$400
225	1902 Edward V11 Florin Matte proof issue, FDC	\$125
226	1918 Florin, Choice Unc with gem mint Bloom	\$125
227	1920 Florin, Lovely Gem, Scarce as such, prob make MS64	\$150
228	1927 George V Florin Proof Issue, FDC	\$75
229	1818 1/2 Crown, Fine	\$75
230	1826 1/2 Crown , Pleasant Very Fine Uncleaned & Problem Free	\$125
231	1834 1/2 Crown, Fine	\$50
232	1834 1/2 Crown, Very Fine	\$100
233	1844 1/2 Crown, aVF	\$100
234	1887 1/2 Crown , Choice Unc	\$75
235	1902 Edward V11 Matte Proof 1/2 CN Well above average Example, FDC	\$200
236	1904 1/2 Crown, gFine & Scarce	\$125
237	1905 1/2 Crown, Good Fine Nice problem free example, latest Cat 750 Pds in VF	\$750
238	1927 1/2 Crown , Proof FDC	\$100
239	1937 1/2 Crown, proof FDC	\$50
240	1950 1/2 Crown, Proof FDC	\$35
241	1951 1/2 Crown, proof FDC	\$50
242	1953 & 1970 Proof 1/2 Crowns	\$10
243	1/3 Guinea 1809 Very Fine	\$250
	Pre Decimal Australian proofs	
244	1955 Perth 1/2 Penny Problem Free, Full mint Red FDC	\$5000
245	1963 Perth Pair , 1/2d & Penny Full mint red , Matched & attractive especially the Penny	\$1,250
246	1962 Perth Pair, 1/2d & Penny Full Mint Red , Evenly Matched	\$1,250
247	1961 Perth Pair, 1/2d & Penny Full Mint Red, Evenly Matched	\$1,250
248	1957 Melbourne proof Set 3d,6d,Shilling & Florin, Lovely origi- nal set, matched & Problem Free	\$1,000
249	1958 Florin, PCGS PR67	\$450

Lot	Description	Opening Bid
250	1956 Sixpence, PCGS PR66	\$250
251	1959 Sixpence, PCGS PR66	\$350
252	1959 Threepence, PCGS PR67	\$300
253	1963 Threepence, PCGS PR66	\$180
254	1963 Sixpence, PCGS PR66	\$180
255	1956 Shilling, PCGS PR65	\$300
	PCGS Graded Australian Coins	
256	1937 Crown, PCGS MS64 Outstanding Coin	\$600
257	1938 Crown, PCGS AU58	\$500
258	1944S Florin, PCGS MS64 Ex Vienna Hoard Roll, Perfect Gem	\$100
259	1946 Florin PCGS MS64 Ex Mint Roll, Mark Free with nice subdued Tone	\$100
260	1947 Florin, PCGS MS64 Second highest graded of the date	\$100
261	1958 Florin, PCGS MS65 Ex Roll & prooflike gem bloom	\$100
262	1916 Shilling PCGS MS64 Outstanding eye appeal, lightly toned with gold , blue & pastel colouring	\$1,000
263	1928 Shilling, PCGS AU55 A Key date & really to the naked eye an Uncirculated coin	\$500
264	1941 Shilling, PCGS MS63 Ex Mint roll from WA	\$150
265	1942 Shilling, PCGS MS64 This the most underrated date in the entire Shilling series, A beautiful Gem	\$500
266	1943 Shilling, PCGS MS64 Again a key coin, Ex small batch of a dozen coins, 1990's Melbourne	\$500
267	1946 Perth Shilling, PCGS MS64 Full mint lustre, not the dull type normally seen with this issue	\$1,000
268	1955 Shilling , PCGS MS66 Toned, absolutely mark free	\$300
269	1959 Shilling, PCGS MS66 Perfection, gem coin	\$125
270	1936 Sixpence, PCGS MS63 Again looks better , with full lustre, original gold tone reverse	\$350
271	1943D Sixpence, PCGS MS66 Number 1 in population report	\$350
272	1956 Sixpence, PCGS MS64 Looks better than a Proof, Reverse really FDC, Great Coin	\$250
273	1951PL Penny, PCGS MS65 Red Second highest in population report, Plucked straight from an original roll	\$300
274	1912H 1/2 Penny, PCGS MS64 Red Ex Baldwins Gem, Note red designa- tion, fantastic Coin	\$1,250
275	1919 1/2 Penny , PCGS MS64RB Again a beautiful surface	\$600
276	1925 1/2 Penny, PCGS MS64 BN Another grade rarity, Maybe less than 10 coins of this date may exist in MS63 or better	\$3,000

Lot	Description	Opening Bid
277	1934 1/2 Penny, PCGS MS64 RB Prooflike early strike	\$650
278	1943M 1/2 Penny, MS64 Red One of the finest known, Bergundy colour with 10/10 for eye appeal	\$250
Australian Coins		
279	1937 Crown, EF	\$35
280	1937 Crown, aUnc	\$50
281	1937 Crown, Uncirculated	\$100
282	1938 Crown, Extremely Fine	\$150
283	1921 Florin, aUncirculated	\$1500
284	1925 Florin , aUncirculated	\$250
285	1926 Florin, Uncirculated	\$750
286	1931 Florin, Choice Uncirculated	\$300
287	1936 Florin, Uncirculated	\$150
288	1938 Florin, Choice Uncirculated	\$100
289	1940 Florin, Uncirculated	\$50
290	1941 Florin, aUncirculated	\$15
291	1942 Florin, Choice Unc & Scarce	\$65
292	1942s Florin BU	\$75
293	1943s Florin, BU	\$50
294	1943 Florin , Choice Unc	\$50
295	1944S Florin, BU	\$50
296	1944 Florin, Choice Unc	\$50
297	1946 Florin Choice Unc	\$50
298	1947 Florin Choice Unc	\$50
299	1951 Florin, Choice Unc	\$75
300	1951 Federation Florin, Choice Unc	\$50
301	1953 Florin, Choice Unc	\$50
302	1954 RV Florin, Choice Unc	\$35
303	1956 Florin, Uncirculated	\$100
304	1960 Florin, BU	\$20
305	1913 Shilling, Good Fine, lustre	\$65
306	1927 Shilling, EF	\$25
307	1938 Shilling, EF	\$5
308	1940 Shilling, Uncirculated	\$300
309	1942 Shilling, aUncirculated	\$15
310	1944M Shilling, Uncirculated	\$50
311	1946 Perth Shilling, Uncirculated	\$250
312	1948 Shilling, Choice Unc	\$75
313	1950 Shilling, Choice Uncirculated	\$30
314	1952 Shilling, Choice Uncirculated	\$25
315	1953 Shilling, Choice Uncirculated	\$30
316	1955 Shilling, BU	\$65
317	1957 Shilling, BU	\$25
318	1958 Shilling, Choice Unc	\$25
319	1959 Shilling Choice Unc	\$20
320	1960 to 1963 Shillings Choice Unc	\$35
321	1911 Sixpence , EF	\$150
322	1912 Sixpence, Good EF	\$250

Lot	Description	Opening Bid
323	1939 Sixpence, Uncirculated	\$250
324	1941 Sixpence, aUnc/Unc	\$25
325	1942D Sixpence, Choice Unc	\$25
326	1943S Sixpence, Choice Unc	\$35
327	1944S Sixpence Choice Unc	\$35
328	1945 Sixpence, BU	\$35
329	1948 Sixpence, Choice Unc	\$75
330	1951 Sixpence, Unc	\$35
331	1951pl Sixpence, Choice Unc	\$25
332	1954 Sixpence, Unc	\$5
333	1958 Sixpence, BU	\$10
334	1961 Sixpence, Choice Unc	\$25
335	1914, Threepence Near EF obverse aUnc Reverse, dished	\$50
336	1916 Threepence EF/aUnc Full bloom	\$100
337	1917 Threepence aUnc/Unc	\$100
338	1919 Threepence aUnc/Unc	\$100
339	1920 Threepence EF	\$100
340	1921M Threepence , Uncirculated	\$75
341	1922 Threepence gVF	\$15
342	1924 Threepence , Sharp EF +	\$100
343	1926 Threepence EF, brushed	\$10
344	1927 Threepence, Uncirculated	\$100
345	1936 Threepence aUnc	\$25
346	1939 Threepence, Uncirculated	\$50
347	1942d Threepence Choice Unc	\$25
348	1943 Threepence Choice Unc	\$30
349	1943D Threepence, BU	\$25
350	1944s Threepence, BU	\$25
351	1948 Threepence, BU	\$25
352	1949 Threepence, Choice Unc	\$25
353	1950 Threepence, Choice Unc	\$25
354	1951PL Threepence, BU	\$15
355	1951M Threepence, Choice Unc	\$35
356	1955 Threepence, BU	\$20
357	1946 Penny, Good VF	\$75
358	1946 Penny, Good VF	\$75
359	1946 Penny, Good VF	\$75
360	1925 Penny , 6 Pearls aVF	\$150
361	1925 Penny , As Above	\$150
362	1925 Penny, As Above	\$150
363	1925 Penny, As Above	\$150
364	1925 Penny As Above (2)	\$300
365	1914 Penny, Extremely Fine +	\$150
366	1923 Penny, Extremely Fine	\$35
367	1924 Penny, Extremely Fine	\$35
368	1926 Penny, Extremely Fine	\$75
369	1931 Penny, Extremely Fine	\$75
370	1934 Penny, Extremely Fine	\$25

Lot	Description	Opening Bid	Lot	Description	Opening Bid
371	1935 Penny, Extremely Fine	\$25	411	GB 1996 70th Birthday, Silver proof Crown, cat 32 Pds	\$35
372	1936 Penny, Extremely Fine	\$20	412	GB 1990 Silver 5 P Piedfort Issue cat 30pds, case & Cert	\$25
373	1938 Penny Uncirculated , Brown	\$35	413	GB 1992 Silver proof 10p 2 Coin set + case & cert	\$25
374	1939 Penny, Uncirculated, Brown	\$75	414	GB 1990 Silver proof 5p, two coin set + case & certificate	\$25
375	1941 Penny, Choice Unc	\$100	415	NZ 1995 \$5 BU, Tui in box of issue, cat \$24 NZ	\$10
376	1942I Penny, Choice Unc	\$50	416	NZ 1996 \$5 Sterling proof , kaka, in box of issue cat \$55 NZ	\$30
377	1943M Penny, Choice Unc	\$50	417	NZ 1997 \$5 Sterling proof, Saddleback, box of issue cat NZ \$45 Mintage only 2500 Coins !	\$30
378	1943I Penny, Choice Unc	\$50	418	GB 1970 Proof Set 1/2d to 1/2 Cn	\$20
379	1947 Penny, Choice Unc	\$50	419	Mautius Unc Set 1978 1c to 1 rupee	\$5
380	1948Y Penny, EF	\$50	420	Netherlands Unc Set 1984, 5c to 2 1/2 Guilder, case of issue	\$15
381	1948 Penny Choice Unc	\$30	421	NZ 1991 Unc Set, Rugby, Cat \$25 NZ	\$10
382	1949 penny, Choice Unc	\$30	422	NZ 1993 Unc Set, Cat \$30 NZ	\$10
383	1950 Penny, Choice Unc	\$35	423	NZ 1994 Unc Set, cat \$30 NZ	\$15
384	1951 Penny, Choice Unc	\$35	424	NZ 1995 Unc Set, Cat \$50 NZ	\$25
385	1951PL Penny, Choice Unc	\$35	425	NZ 1996 Unc Set, cat \$50 NZ	\$25
386	1951Y Penny Choice Unc	\$100	426	NZ 1997 Unc Set, cat \$60 NZ	\$30
387	1952 Penny, Choice Unc	\$35	427	PNG 10 Kina Silver Coin, 1st day Cover, Folder of Issue FDC	\$25
388	1953 Penny, Choice Unc	\$50	428	PNG, Proof Set 1975 1 Toe to 10 Kina, aech coin with stapes 1st day cover, high silver content & Scarce	\$50
389	1956 M Penny, Choice Unc	\$35	429	NZ 1965 & 1967 Specimen sets 1st & last, in folders of issue	\$12
390	1960P Penny Choice Unc	\$35	430	NZ 1988 Penguin Proof Set	\$25
391	1938 1/2 Penny, Choice Unc	\$35	431	NZ 1988 Penguin proof \$1	\$25
392	1940 1/2 Penny Uncirculated	\$50	432	NZ 1995 Gold Rush \$10, Mintage 5400 only, in Box of Issue	\$15
393	1942M 1/2 Penny aUnc, Lustre	\$75	433	NZ 1997 Gold Rush issue \$10 Mintage 2500 only, Cat NZ\$40	\$20
394	1943M 1/2 Penny, Red Unc	\$15	434	NZ 1999 \$5 proof Wellington City Mintage a mere 1800, Cat NZ\$60	\$30
395	1948 1/2d Penny, aUnc, Lustre	\$5	435	St helena Piedfort 1 Pound Sterling Proof 1984	\$25
396	1951Y 1/2 Penny Choice Unc	\$25	436	St Helena 25P Specimen , Tercentenary of East India Company	\$10
397	1951PL 1/2 Choice Unc	\$25	437	Bermuda Sterling Silver \$1 1985, proof in Box of Issue	\$25
398	1953P 1/2 Penny Choice Unc	\$25	438	Falkland Islands , Sterling proof Crown 1977, Box of Issue	\$20
399	1959 1/2 Penny, Choice Unc	\$10	439	NZ 1997 Christchurch Proof \$5 Silver in box of issue	\$30
400	1961 1/2 Penny Choice Unc	\$5	440	West Somoa Silver Unc Tala 1980 Box Of Issue	\$10
World Coins			441	jersey Silver proof 2 Pds , Liberation issue 1985, Box of Issue	\$30
Modern Issues			442	South Africa Florin, 1923 aUnc	\$50
401	GB 1984 Proof 1 Pound, Silver cat 32pds, Case & certificate	\$32			
402	GB 1991 Proof 1 Pound, Silver, Cat 32 pds, Case & certificate	\$32			
403	GB 1994 proof 1 Pound, Silver, Cat 32 pds, case & cert, (Sct Lion)	\$32			
404	GB 1996 Proof 1 Pound, Silver, cat 33 pds, case + cert (celtic Cross)	\$33			
405	GB 1994 2 Pounds, Silver Cat 28 Pds, Case + Cert, Bank of England	\$28			
406	GB 1995 2 Pds, Silver , cat 35 Pds case + cert & Scarce	\$40			
407	GB 1992/93 proof 50p, cat 35pds Case + cert & Scarce , Silver issue	\$35			
408	GB 1981 Charles & Di, Silver Proof Crown	\$25			
409	GB 1990 Silver Proof Crown Cat 34 Pds	\$35			
410	GB 1990 Silver proof Crown, 90th Birthday celebrations, cat 34pds	\$35			

Lot	Description	Opening Bid
443	Fiji 1936 Edward V111 Pennies Choice Unc (20 Coins)	\$50
444	Germany 1 mark 1914, BU	\$20
445	Germany 1 Mark 1914 BU (9 Coins)	\$125
446	Jersey 1/12 Shilling, 1923 Unc	\$25
447	Russia 2 Kopeck 1828, aVF	\$25
448	Kenya 5 & 10c 1978, BU	\$5
449	Fiji 1/2d 1950 & 1954 BU	\$25
450	Brit West Africa 1914 Shilling, VF	\$15
451	Central African Republic, 5, 10 & 25 Franc 1971/72 & 25 Franc 1981 BU	\$25
452	Tanzania 5c to 5 Shillings 1981 BU, 6 Coins	\$10
453	Guyana 1c to \$1 , Mixed Dates early 1980's, Uncirculated (5 Coins)	\$5
454	Paraguay, 3 Coins set 1953, 15, 25 & 50 Cents, BU	\$10
455	Spain 6 coin Unc set, Uruguay 7 Coins set & Ghana 4 Coin Set	\$10
456	Sweden 43 Coin Type set, All differ- ent Krause numbers from 1874 to modern Fine to Unc	\$50
457	Canada 1c 1945 MS64, 25c Silver 1942 & 1953 Unc to Choice Unc	\$25
Late Lots		
458	NZ 1/2 Crowns 1947 to 1965 50 Coins Fine to gVF	\$25
459	Australia 1866 Sovereign Uncirculated, Reverse Choice	\$1250
460	GB 1953 1/2 Crown & Florin Proof	\$20
461	GB 1937 Florin, Proof FDC	\$25
462	GB 1950 Florin, Proof FDC	\$15
463	GB 1951 Florin, Proof FDC	\$15
464	GB 1/2d 1937,50,51,53 Proofs	\$35
465	GB Crown type set, 1935 Unc, 1937 Unc Then 1951 Specimen, 1953BU + 1960,65,72,77,80,81 BU	\$75
466	Lesetho Proof Set 1966 4 silver coins in red box of issue	\$35
467	NZ 1940 Centennial 1/2 Crowns 7 Coins aUnc to Unc	\$100
468	QE11 Australian 10 Shilling, Crisp EF	\$50
469	QE11 Australian 1 Pound , Crisp gVF some rust spots	\$10
470	GB Complete QE11 Shilling set 1953 to 1966 Scottish & English 28 Coins VF to Unc including scarce dates	\$20
471	GB Sixpences 1937 to 1967 Complete VF to Unc	\$15
472	Australian Dansco Supreme Album 1/2 Sovereigns & Sovereigns (type)	\$35
473	Dansco Supreme Album for US Silver Dollars 1879 to 1935, (2 Albums)	\$50

Lot	Description	Opening Bid
An accumulation of World coins built up over the last 20 years. Nothing scarce but each kilo has a few hun- dred coins, Great for starting a new collector.		
474	Kilo , Mixed World Coins	\$30
475	Kilo, Mixed World Coins	\$30
476	Kilo, Mixed World Coins	\$30
477	Kilo, Mixed World Coins	\$30
478	Kilo, Mixed World Coins	\$30
479	Kilo, Mixed World Coins	\$30
480	Kilo, Mixed World Coins	\$30
481	Kilo , Mixed World Coins	\$30
482	Kilo, Mixed World Coins	\$30
483	Kilo, Mixed World Coins	\$30
484	Kilo, Mixed World Coins	\$30
485	Kilo, Mixed World Coins	\$30
486	Kilo, Mixed World Coins	\$30
487	Kilo, Mixed World Coins	\$30
488	Kilo, Mixed World Coins	\$30
489	Kilo, Mixed World Coins	\$30
490	Kilo, Mixed World Coins	\$30
491	Kilo, Mixed World Coins	\$30
492	Kilo, Mixed World Coins	\$30
493	Kilo, Mixed World Coins	\$30
494	Kilo, Mixed World Coine	\$30
495	Kilo, Mixed World Coins	\$30
496	Kilo, Mixed World Coins	\$30
497	Kilo, Mixed World Coins	\$30
498	Kilo, Mixed World Coins	\$30
499	Kilo, Mixed World Coins	\$30
500	Kilo, Mixed World Coins	\$30

End of Auction

Other World Coins



1959 Shilling, PCGS MS66



1936 Sixpence, PCGS MS63



1944S Florin PCGS, MS64



1928 Shilling, PCGS AU55

